

NORTON 'COMMANDER' TECHNICAL DATA

ENGINE	Chamber Capacity	588cc	Final Drive Sprocket	43
	Power Output	85 BHP (63.4 Kw) @ 9000 R.P.M.	Chains	Front 92 x $\frac{3}{8}$ in x $\frac{7}{16}$ in pitch
	Compression Ratio	9.0:1		Rear 112 x $\frac{5}{8}$ in x $\frac{3}{8}$ in
	Fuel-Octane	95 RON-leaded or unleaded	CAPACITIES	
SPARKING PLUG		Champion UG80 P.V. or UG 501 P		Fuel Tank 23 litres (5 imp gals)
CARBURETTER		S.U. HIF4 Constant vacuum		Oil Tank 4 litres (7 imp pints)
	Choke Size	38mm diam.		Gearbox 1 litre (1 $\frac{3}{4}$ imp pints)
GEARBOX		5 SPEED		Primary Chaincase 250cc
	Ratios 1st	1:2.58		Rear Chaincase 175cc Initial fill-75cc Refill
	2nd	1:1.8	BRAKES	Forks (each leg) 250cc
	3rd	1:1.40		Disc Diam (Front & Rear) 265mm
	4th	1:1.19		TYRE SIZE
	5th	1:1		Front 100/90V 18 Pirelli Phantom MT2
Gearbox Sprocket		17		Rear 110/90V 18 Pirelli Phantom MT2

NORTON 'COMMANDER' MOTORCYCLE

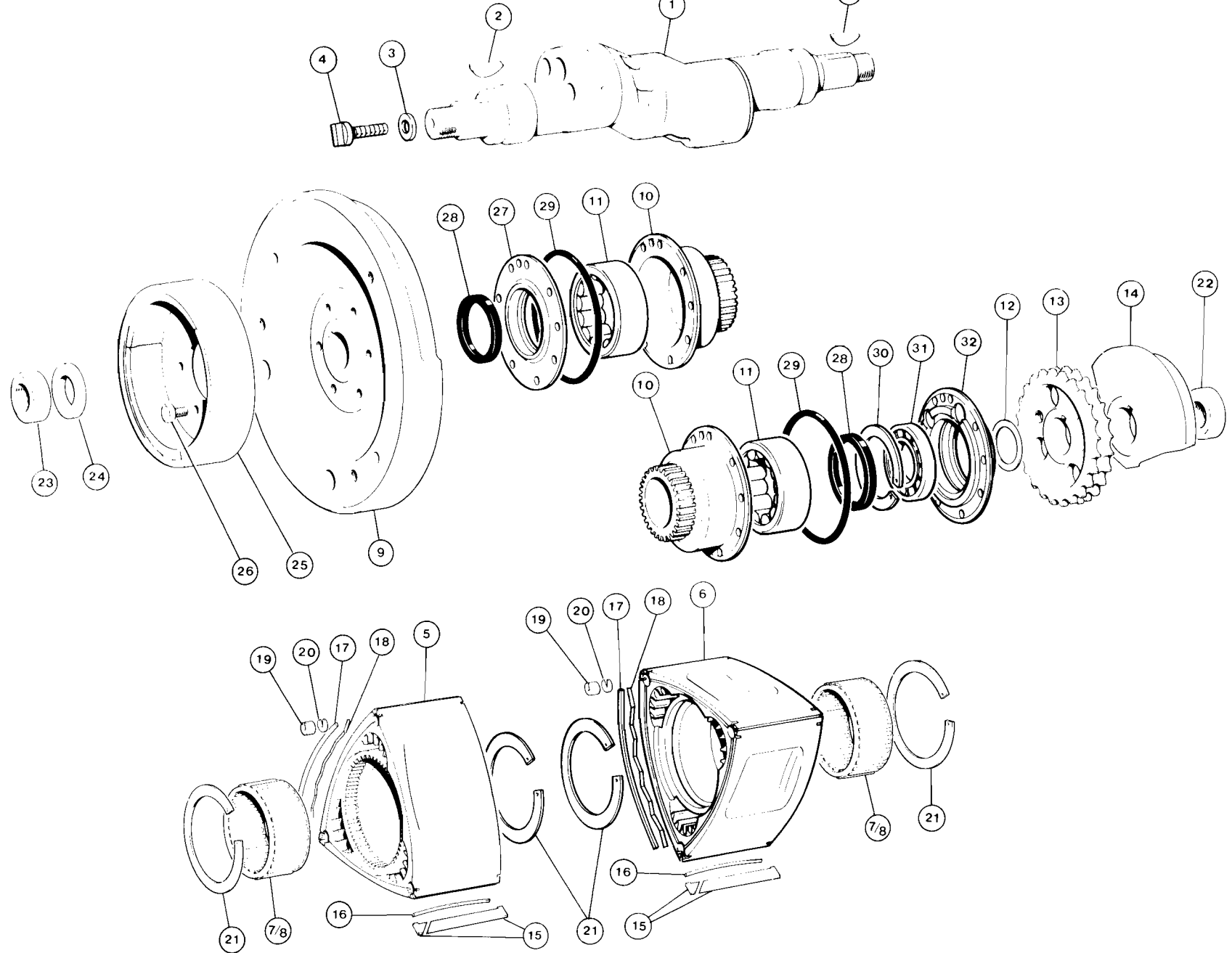
REPLACEMENT PARTS CATALOGUE

Section

- | | |
|--|---|
| 1. Rotors and Rotor Shaft Assemblies | 12. Radiator and water pump |
| 2. Rotor Housings and Fittings | 13. Fuel tank and seat |
| 3. Starter Gear and Clutch Equipment | 14. Front fairing and tank cover |
| 4. Primary Chaincase Assembly | 15. Side panels, tail unit and panniers |
| 5. Gearbox Housing, Rear Swinging Arm, Side and Centre Stands and Rear Chain Drive | 16. Instruments and instrument case |
| 6. Gears, Shafts and Fittings | 17. Front fork |
| 7. Mainshaft 5th Gear, Gearbox sprocket and sprocket cover with outrigger bearing | 18. Handlebar, controls and cables |
| 8. Oil Pump and Pipes | 19. Front wheel and front brakes |
| 9. Gearbox Outer Cover and Gearchange mechanism | 20. Rear wheel and brake caliper mounting |
| 10. Frame Assembly Suspensions Units and fittings | 21. Rear brake master cylinder, brake pedal and caliper |
| 11. Air filters, transfer parts, carburetter and inlet pipes | 22. Footrests, mounting plates and exhaust system |
| | 23. Electrical equipment |
| | 24. Tool kit. |

INDEX

	Page		Page		Page		Page
Air Filters.....	27	Fan and Cowl.....	29	Ignition Unit.....	51	Rotor Shaft.....	7
Balance Weight - Rotor Shaft.....	7	Filler Cap, Oil.....	25	Inlet Pipes.....	27	Seat.....	31
Balance Weights - Wheel.....	43,45	Filter, Air.....	27	Instrument Case.....	37	Shocks (Suspension Units).....	25
Battery.....	51	Filter, Oil.....	25	Intermediate Plate.....	9	Side Panels.....	35
Battery Carrier Strap.....	51	Flasher Lamps.....	51	Junction Block.....	43	Silencer.....	49
Brake Pads.....	43,47	Flasher Unit.....	51	Layshaft Bearings.....	17	Silencer Mounting Plates.....	49
Brake Pedal.....	47	Flywheel.....	7	Lifting Handle (LH & RH).....	25	Spark Plugs.....	9
Cable, Choke.....	41	Footrest.....	49	Line, Fuel.....	27	Speedometer.....	37
Cable, Clutch.....	41	Forks, telescopic.....	39	Line, Hydraulic.....	47	Speedometer Gearbox.....	43
Cable, Throttle.....	41	Frame Assembly.....	25	Line, Oil.....	25	Sprocket, Engine.....	7
Caliper.....	43,47	Front Fairing.....	33	Light, Head.....	51	Sprocket, Gearbox.....	19
Camplate.....	17	Fuel Gauge.....	37	Light, Tail.....	51	Sprocket, Rear.....	45
Camplate Plunger.....	17	Fuel Tank Sender Unit.....	31	Main Bearings.....	7	Stand, Centre.....	15
Carburettors.....	27	Fuel Tank.....	31	Mainshaft Bearings.....	17	Stand, Prop (Side).....	15
Carburettor Manifold.....	27	Fuel Tap.....	31	Master Cylinder.....	41,47	Stationary Gear.....	7
Centre Stand.....	15	Fuses.....	51	Mirror.....	33	Stator.....	29
Chain Adjuster, Rear.....	15	Gearbox End Cover.....	17	Mudguard Front.....	39	Starter, Electric Motor.....	11
Chaincase Outer.....	13	Gearbox Outer Cover.....	23	Neutral Indicator Switch.....	15	Starter Solenoid.....	51
Chain - Primary.....	13	Gearbox Selector.....		Oil Filter.....	25	Steering Head Bearings.....	39
Chain - Rear.....	15	Mechanism.....	23	Oil Pump.....	21	Support Plates, Footrest.....	49
Chain Tensioner - Primary.....	13	Gearbox Shell.....	15	Oil Pipes.....	9,21	Suspension Units, Rear.....	25
Clock.....	37	Gears and Shafts.....	17,19	Outrigger Bearing - Mainshaft.....	19	Swinging Arm.....	15
Clutch.....	11	Gearchange Arm.....	23	Panniers.....	35	Switch, Light.....	39
Clutch Diaphragm Spring.....	11	Gearchange Pedal.....	23	Pannier Lids.....	35	Switch, Dip.....	41
Clutch Lever.....	41	Generator Rotor.....	7	Pedal, Rear Brake.....	47	Switch, Direction Indicator.....	41
Clutch Lift Mechanism.....	13	Generator Stator.....	29	Petrol Filler Cap.....	31	Switch, Neutral Indicator.....	15
Clutch Plates.....	11	Grab Rail.....	35	Petrol Tap.....	31	Switch, Stop, Rear.....	47
Clutch Thrust Bearing.....	11	Handlebar Controls.....	41	Primary Chain.....	13	Tachometer.....	37
Coil, Ignition.....	51	Handlebars.....	41	Primary Chaincase.....	13	Tail Unit.....	35
Contents.....	3	Harness.....	51	Primary Chain Tensioner.....	13	Tank, Petrol.....	31
Cush Drive Rubber.....	11	Headlight.....	51	Prop Stand.....	15	Tap, Fuel.....	31
Digital Clock.....	37	Headlight Glass.....	33	Pump Housing.....	29	Telescopic Fork.....	39
Direction Indicator Flasher.....	51	Header Tank.....	33	Radiator.....	29	Temperature Switch.....	9
Direction Indicator Lights.....	51	Heat Shield.....	49	Radiator Surround.....	29	Thermocouple.....	9
Disc Brake - Front.....	43	Horn.....	51	Rear Chain.....	15	Tools.....	53
- Rear.....	45	Horn Relay.....	51	Rear Chain Gaiter.....	15	Trafficators.....	51
Drive Dog.....	7	Hose, Hydraulic.....	43,47	Rotor Assembly.....	7	Vacuum Tapping Point.....	9
Drive Plate.....	45	Hydraulic System, Front.....	43	Rotor Housing.....	9	Water Pump.....	29
End Plates.....	9	Rear.....	47	Rotor Seals.....	7	Wheel, Front.....	43
Equal Ended Coupling.....	21	Ignition Coil.....	51			Wheel, Rear.....	45
Exhaust Manifold.....	49	Ignition Cut Out Switch.....	41			Windscreen.....	33
Exhaust Pipes.....	49	Ignition Switch.....	39			Wiring Harness.....	51
		Ignition Trigger Unit.....	9				



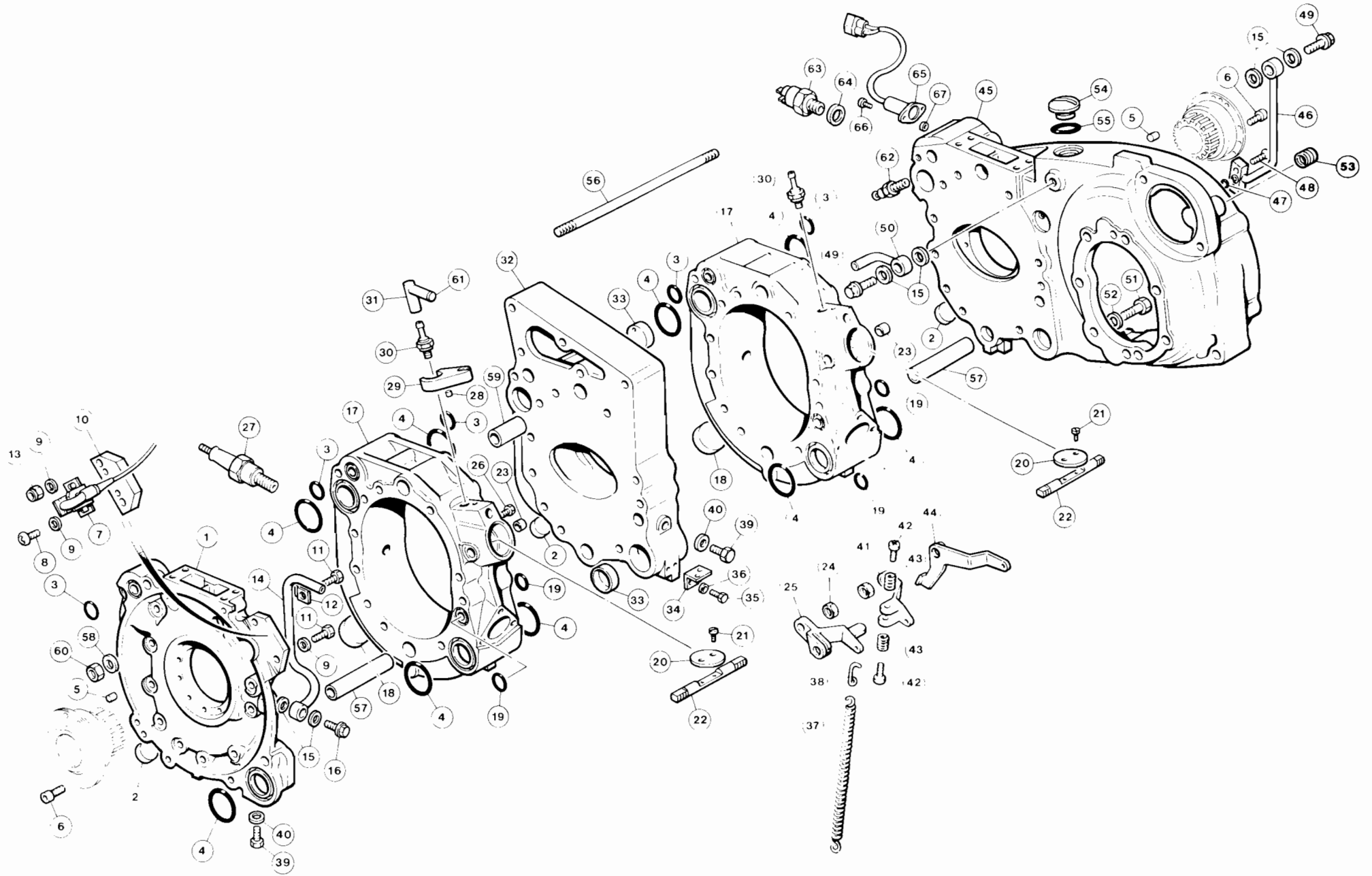
ROTORS AND ROTOR SHAFT ASSEMBLIES

Illus.No.	Part No.	Description	Qty	Illus.No.	Part No.	Description	Qty
	50-0717	Rotor Shaft, Rotors (7.5:1), Stationary gears and flywheel assembly balanced and matched	1	15	50-0400	Apex seal set	6
1	50-0688	Rotor Shaft	1	16	50-0415	Apex seal spring	6
2	50-0169	Woodruff key	2	17	50-0156	Side seal	12
3	*50-0678	Shim (0.25mm)	1	18	50-0157	Side seal spring	12
4	50-0677	Drive Dog	1	19	50-0363	Apex seal pin	12
5	50-0795	Rotor Left (9:1)	1	20	50-0489	Spring - apex seal pin	12
6	50-0796	Rotor Right (9:1)	1	21	50-0153	Circlip	4
7	55-0167	Needle bearing size -9, -11		22	34-0077/000	Nut M20 - balance weight clamping	1
8	55-0168	Needle bearing size -1, -3	2	23	23-2037/004	Nut M18 - flywheel clamping	1
9	50-0656/007	Flywheel	1	24	50-0288	Washer - flywheel clamping	1
10	50-0771	Stationary gear	2	25	55-1398	Generator rotor	1
11	55-0134	Main bearing	2	26	23-1032/004	Bolt M6 - generator rotor fixing	6
12	(50-0131 Shim 0.500mm 50-0553 Shim 0.250mm 50-0554 Shim 0.125mm)		1	27	50-0759	Oil seal housing L.H.	1
13	50-0317	Sprocket	1	28	55-0417	Oil seal	2
14	50-0118	Balance weight	1	29	55-0361	'O' ring - stationary gear seal	2
15-20	92-1718	Complete seal set	1	30	55-0231	Circlip 47x1.75	1
				31	55-0135	Axial bearing - ball	1
				32	50-0689	Housing for bearing and oil seal	1

* Alternatives available

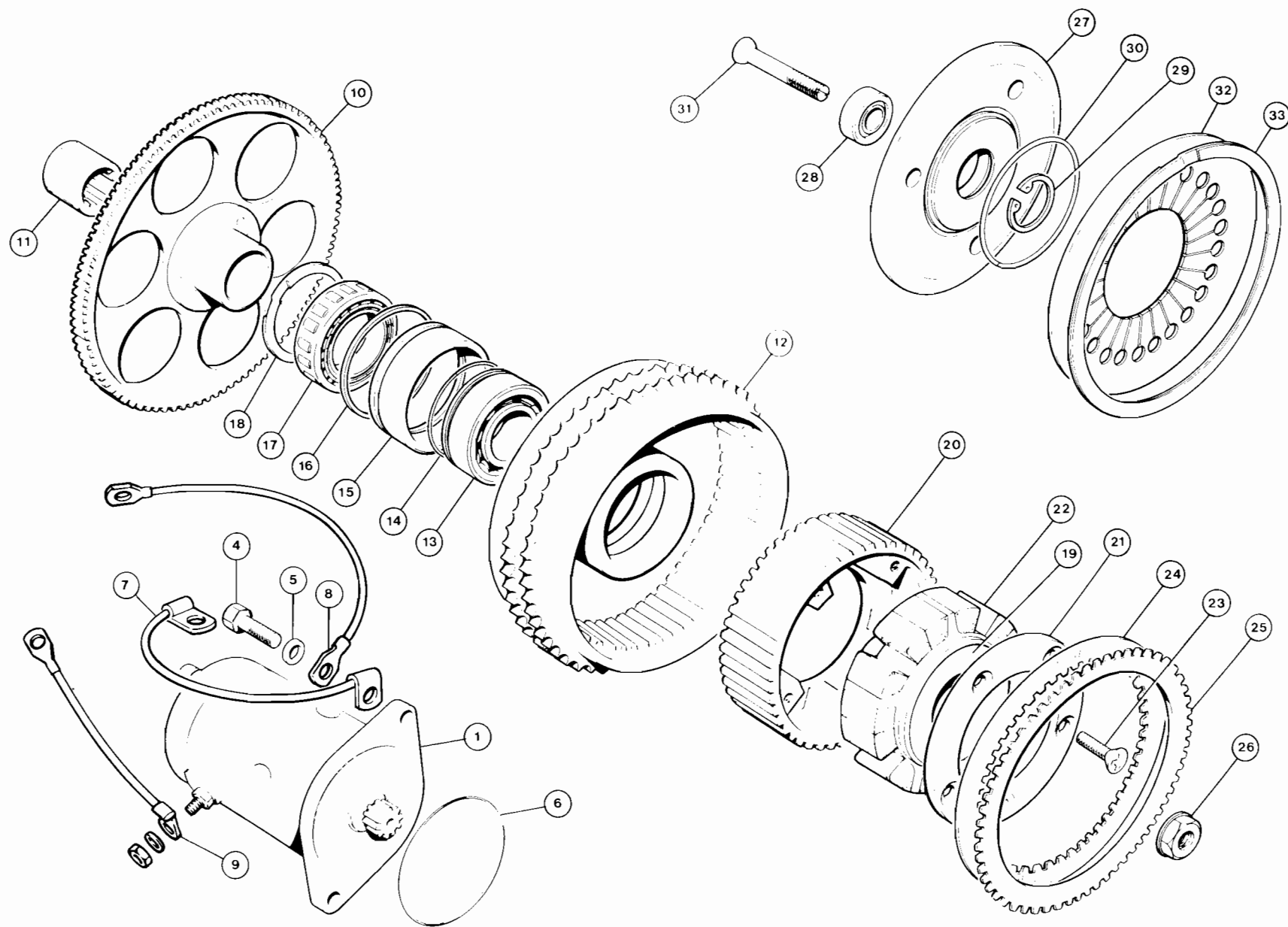
50-0679 Shim 0.50mm

50-0680 Shim 1.00mm



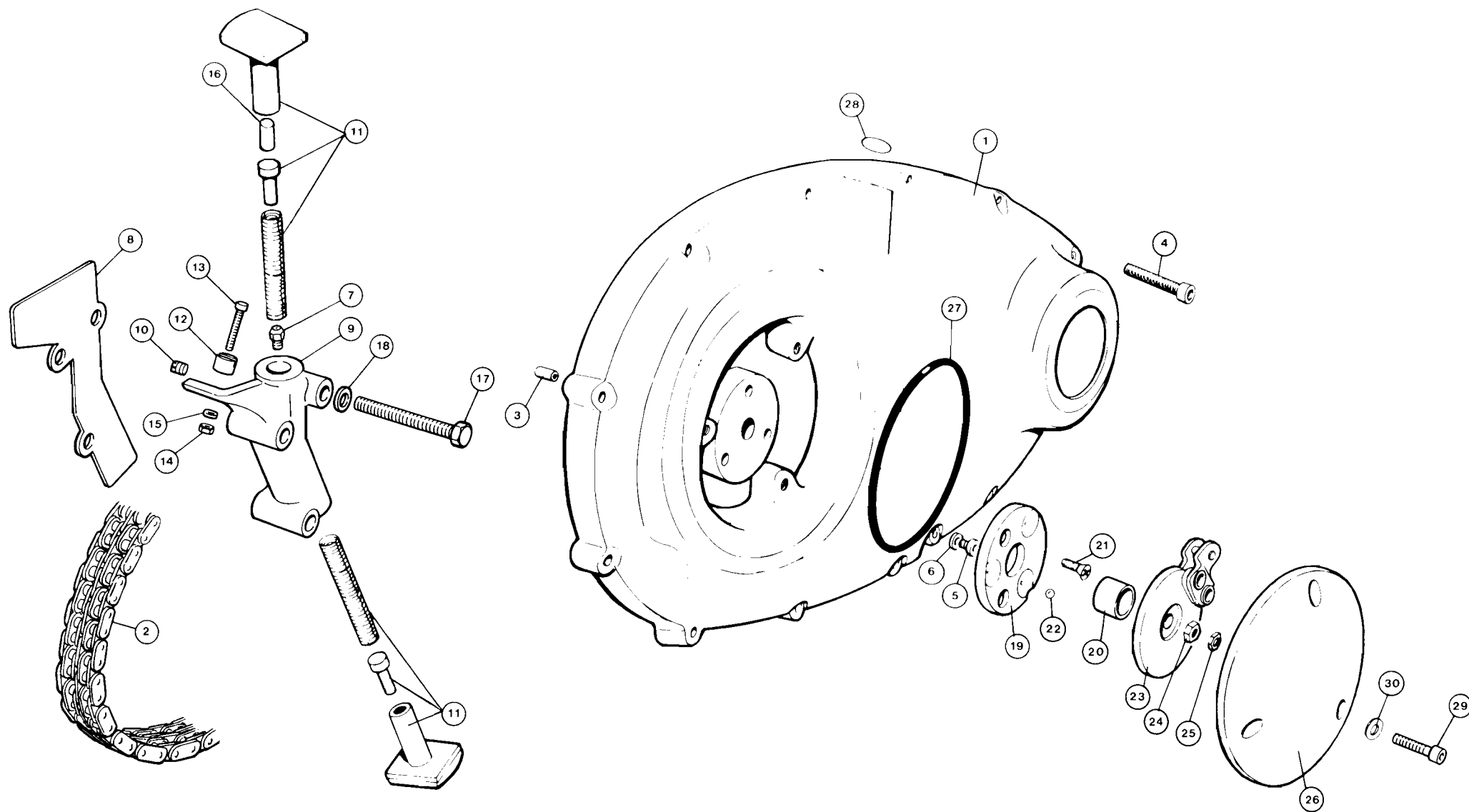
ROTOR HOUSINGS AND FITTINGS

Illus.No.	Part No.	Description	Qty	Illus.No.	Part No.	Description	Qty
1	50-0783	End plate, Left hand side	1	35	23-1003/004	Screw M4x10	2
2	55-0774	Core plug	3	36	23-1603/004	Spring washer M4	2
3	55-0958	'O' ring (medium)	5	37	50-0623	Throttle return spring	2
4	55-0957	'O' ring (large)	9	38	50-0792	Spring hook	2
5	50-0163	Locating Dowel	2	39	23-4031	Drain plug (M6x10)	2
6	23-1015/004	Screw - stationary gear	18	40	34-0061	Copper washer	2
7	50-0785	Ignition Trigger unit	1	41	50-0767	Throttle lever right hand	1
8	23-1364/004	Screws M5x0.8x10 pan head	2	42	23-4357/A2-70	Throttle balancing screw M4x12 pan	2
9	23-1555/004	Washer M5 plain	6	43	50-0421	Spring - balancing screw	2
10	50-0142	Mounting pad - ignition trigger unit	1	44	50-0724	Fast idle lever	1
11	23-1369/004	Bolt M5x0.8x35 hex head	2	45	50-0727	End plate right hand side	1
12	92-2087	Pipe clip	1	46	50-0692	Oil pipe R.H. (internal)	1
13	23-2101/004	Nyloc nut	2	47	55-0968	'O' ring	1
14	50-0770	Oil pipe L.H.	1	48	34-0290	Screw	2
15	55-0531	Plain washer - aluminium	6	49	55-0530	Banjo bolt (short)	2
16	55-0533	Banjo bolt	1	50	50-0738	Oil pipe R.H. (external)	1
17	50-0765	Rotor Housing Assembly	2	51	23-1142/000	Screws M8 right hand end plate to gearbox	7
18	55-0775	Core plug	2	52	34-0101	Plain washer M8	7
19	55-0960	'O' ring (small)	4	53	55-0235	Helicoil insert	1
20	50-0175	Throttle disc	2	54	06-0659	Oil filler plug	1
21	34-0252/000	Screw - pan head	4	55	06-2580	Filler plug 'O' ring	1
22	50-0499	Throttle spindle	2	56	34-0270	Engine stud 1/4in U.N.F.	12
23	55-0138	Bush throttle spindle	4	57	50-0290	Dowel tube for rotor housing	4
24	23-5002/004	Nut M6x1 x5	2	58	34-0153	Washer	12
25	50-0766	Throttle lever left hand	1	59	50-0552	Tubular spacers	2
26	23-1222/004	Screw-throttle stop M5x0.8x12	1	60	34-0306/004	Nut 1/4in U.N.F.	10
27	55-0449	Spark plug Champion UG80 PV	2	61	55-0462	Tailpiece adaptor	1
28	55-0769	Spirol pin	1	62	55-0853	Temperature sender	1
29	50-0583	Abutment plate - throttle cable	1	63	55-1144	Fan temperature switch	1
30	50-0572	Tapping point - vacuum gauge	2	64	34-0308	Copper washer	1
31	55-1259	Elbow - vacuum tapping point	1	65	92-2085	Thermistor	1
32	50-0750	Intermediate plate assembly	1	66	34-0274	Screw (M8)	2
33	50-0758	Core plug - vented	2	67	23-1552/004	Washer (M8)	2
34	50-0722	Hook plate	1				



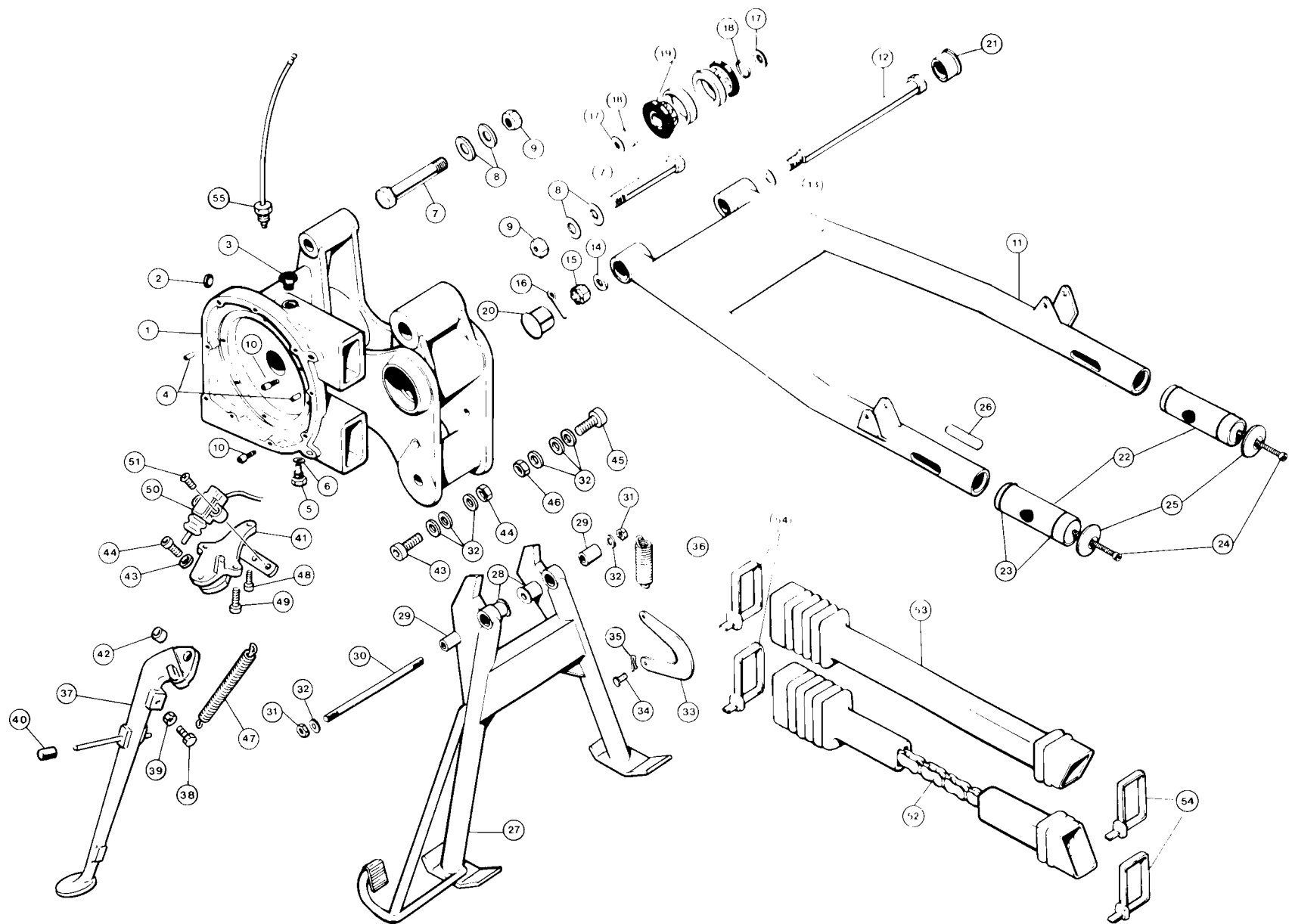
STARTER GEAR AND CLUTCH EQUIPMENT

Illus.No.	Part No.	Description	Qty
1	50-0626	Starter Motor	1
2	50-0625	Bearing Bush - end plate (Not illus.)	1
3	55-0672	Oil seal (Not illus.)	1
4	23-1042/004	Screw M8x1.25x20 hex head	2
5	23-1572/004	Washer M8 plain	2
6	55-0442	'O' ring	1
7	92-2195	Cable - battery to earth (black) - right hand	1
8	92-2196	Cable - battery to earth (black) - left hand	1
9	92-0434	Starter cable - solenoid to starter (red)	1
10	69-0540	Starter gear assembly	1
11	55-0386	Needle roller bearing - starter gear	1
12	69-0533	Clutch sprocket assembly	1
13	55-0743	Bearing clutch sprocket	1
14	69-0699	Circlip bearing - external	1
15	69-0698	Sleeve - freewheel outer race	1
16	69-0700	Circlip - sleeve - internal	1
17	69-0617	Freewheel - unit	1
18	55-0110	Circlip - internal	1
19	69-0671	Clutch hub	1
20	69-0625	Cush drive housing	1
21	69-0603	Cush drive end plate	1
22	69-0673	Cush drive rubbers	15
23	34-0058/000	Screw M5 countersunk	5
24	69-0559	Clutch plate driven bronze	9
25	69-0558	Clutch plate plain	9
26	34-0277/000	Clutch nut $\frac{5}{8}$ "	1
27	69-0657	Clutch pressure plate	1
28	55-0807	Thrust bearing - pressure plate	1
29	55-0551	Circlip - thrust bearing	1
30	69-0662	Pivot ring	1
31	69-0711	Clutch lift screw articulating	1
32	69-0560	Diaphragm spring	1
33	55-0471	Circlip (spirolox) diaphragm spring retaining	1



PRIMARY CHAINCASE ASSEMBLY

Illus.No. Part No.		Description	Qty
1	69-0628/008	Chaincase outer cover - black anodised	1
2	55-0447	Primary chain $\frac{3}{8}$ in Duplex	1
3	57-0989	Hollow dowel	2
4	23-4247/A2-70	Screw (M6 socket head)	12
5	23-4241/A2-70	Oil level screw (M6 socket head)	1
6	34-0061	Copper washer	2
7	55-0117	Jet	1
8	69-0516	Chain tensioner backplate	1
9	69-0522	Chain tensioner body	1
10	69-0619	One-way valve assembly	1
11	69-0622	Chain slipper, spring and piston assembly	1
12	55-0822	Magnet	1
13	34-0272	Screw (M4x20 Cap head)	1
14	23-2109/004	Nyloc Nut (M4)	1
15	23-1519/000	Washer (M4 shakeproof) internal	1
16	69-0605	Aluminium plug	1
17	23-1147/000	Bolt (M8 hex head)	3
18	23-1572/000	Plain washer	3
19	69-0763	Back plate - clutch lift mechanism	1
20	69-0580	Bush - clutch lift mechanism	1
21	23-1484/000	Screw (M6 x1 x8) c/sunk	2
22	55-0843	Ball (8mm)	3
23	69-0764	Clutch lift plate assembly	1
24	69-0712	Adjuster nut (M8)	1
25	34-0120/004	Locknut (M8)	1
26	69-0552/011	Cover - clutch mechanism	1
27	55-0466	'O' ring - sealing clutch lift mechanism cover	1
28	55-0362	'O' ring - clutch cable seal	1
29	23-4243/A2-70	Cover screws	3
30	55-0432	Nylon washer	3

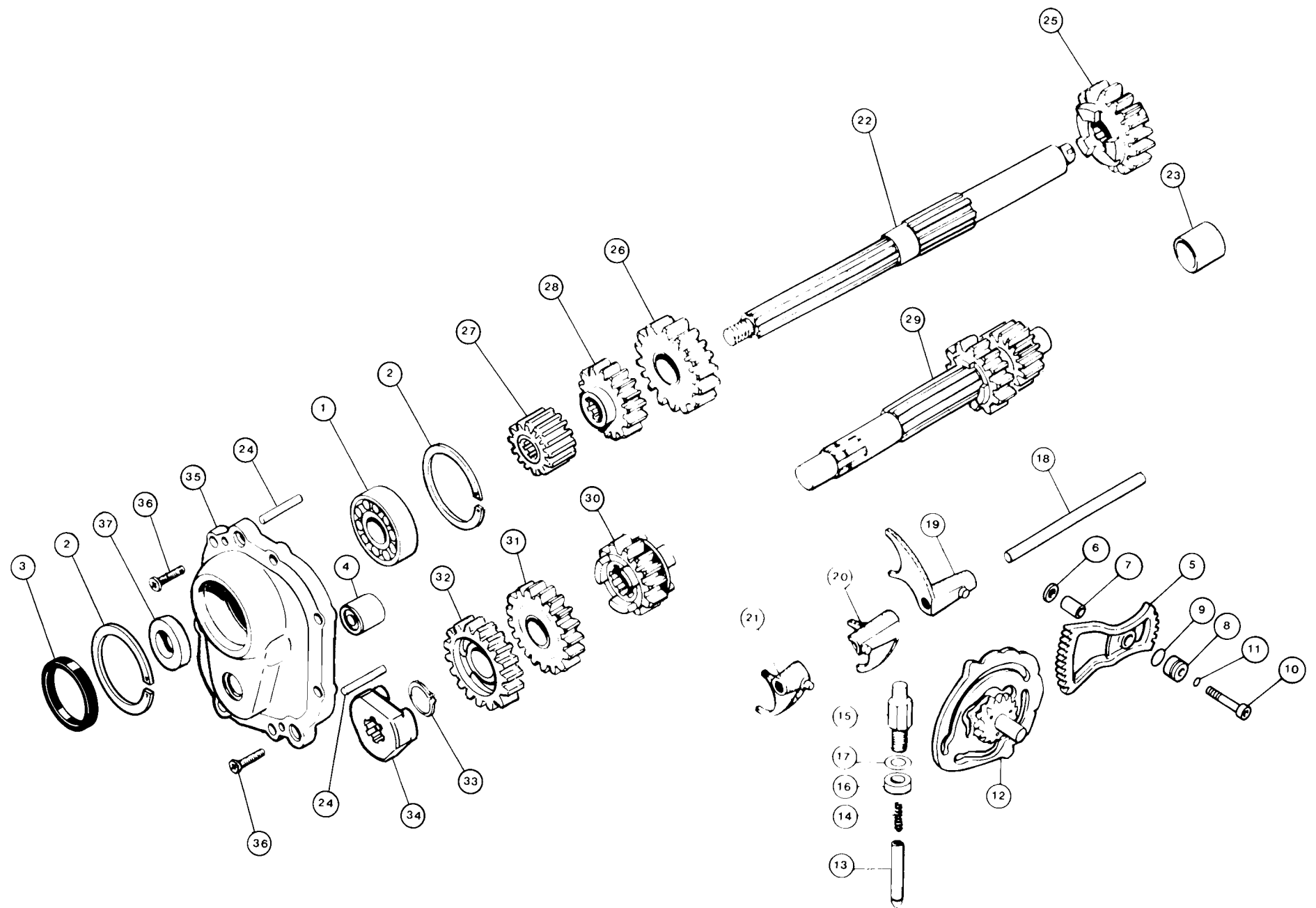


GEARBOX HOUSING, REAR SWINGING ARM, SIDE AND CENTRE STANDS AND REAR CHAIN DRIVE

Illus.No.	Part No.	Description	Qty	Illus.No.	Part No.	Description	Qty
1	69-0503	Gearbox housing	1	28	55-0146	Nylon bush	2
2	55-0583	Core plug	1	29	92-0220	Pivot spacer	2
3	55-0224	Filler plug (rear chain)	1	30	34-0092/004	Pivot stud	1
4	57-0989	Dowel (hollow) left hand	2	31	23-2113/004	Nyloc nut (M10)	2
5	69-0684	Magnetic drain plug	1	32	23-1558/004	Plain washer (M10)	8
6	34-0062	Copper washer	1	33	92-0729	'C' hook	2
7	34-0045/004	Bolt (M14 - gearbox mounting to frame)	2	34	06-0552	Clevis pin	2
8	23-1570/004	Plain washer (M14)	4	35	06-0553	Securing clip	2
9	34-0086/004	Nut (M14 nyloc)	2	36	92-0950	Tension spring	2
10	92-1255	Sealing stud (footrest mounting plate to gearbox housing)	2	37	92-1614	Side stand leg	1
11	92-0688	Swinging arm assembly	1	38	23-4035	Screw M6x20	1
12	92-0076	Swinging arm spindle	1	39	23-5019	Thin locknut M6	1
13	34-0155/004	Thrust washer	1	40	55-1324	Rubber stop	1
14	23-1570/004	Plain washer	1	41	92-1616	Support bracket	1
15	34-0143/004	Castellated nut (M14)	1	42	92-0412	Pivot bush	1
16	34-0151	Split pin (M2.5x20)	1	43	34-0101	Washer (M8)	1
17	92-0092	Spacer	*see below	44	23-4043/A2-70	Pivot bolt (M8x1.25x25 hex)	1
18	55-0211	'O' ring	2	45	23-4063/A2-70	Stop screw (M10 socket cap)	2
19	55-0358	Taper roller bearing	2	46	23-2004/004	Nut (M10)	2
20	55-0653	Pivot dust cap (Parallel type) Left hand	1	47	92-1289	Spring	2
21	92-0570	Pivot dust cap right hand	1	48	23-4042/870	Screw (M8x1.25x20 socket head)	1
22	92-0078	Wheel adjustment plug	2	49	23-4266/870	Screw (M8x1.25x25 socket head)	2
23	55-0211	'O' ring - adjustment plug	4	50	55-0824	Ignition cut out switch	1
24	34-0063/004	Screw (M8x1.25x50 socket cap)	2	51	23-4469	Screw	2
25	92-0080	Tube end cap	2	52	55-0392	Rear chain (112 links $\frac{5}{8} \times \frac{3}{8}$ in)	1
26	92-0372	Decal (rear wheel alignment)	2	53	69-0553	Chain gaiter	2
27	92-1619	Centre stand	1	54	55-0582	Chain gaiter clip	4
				55	69-0635	Neutral indicator Switch	1

*92-0092 Spacer available as:

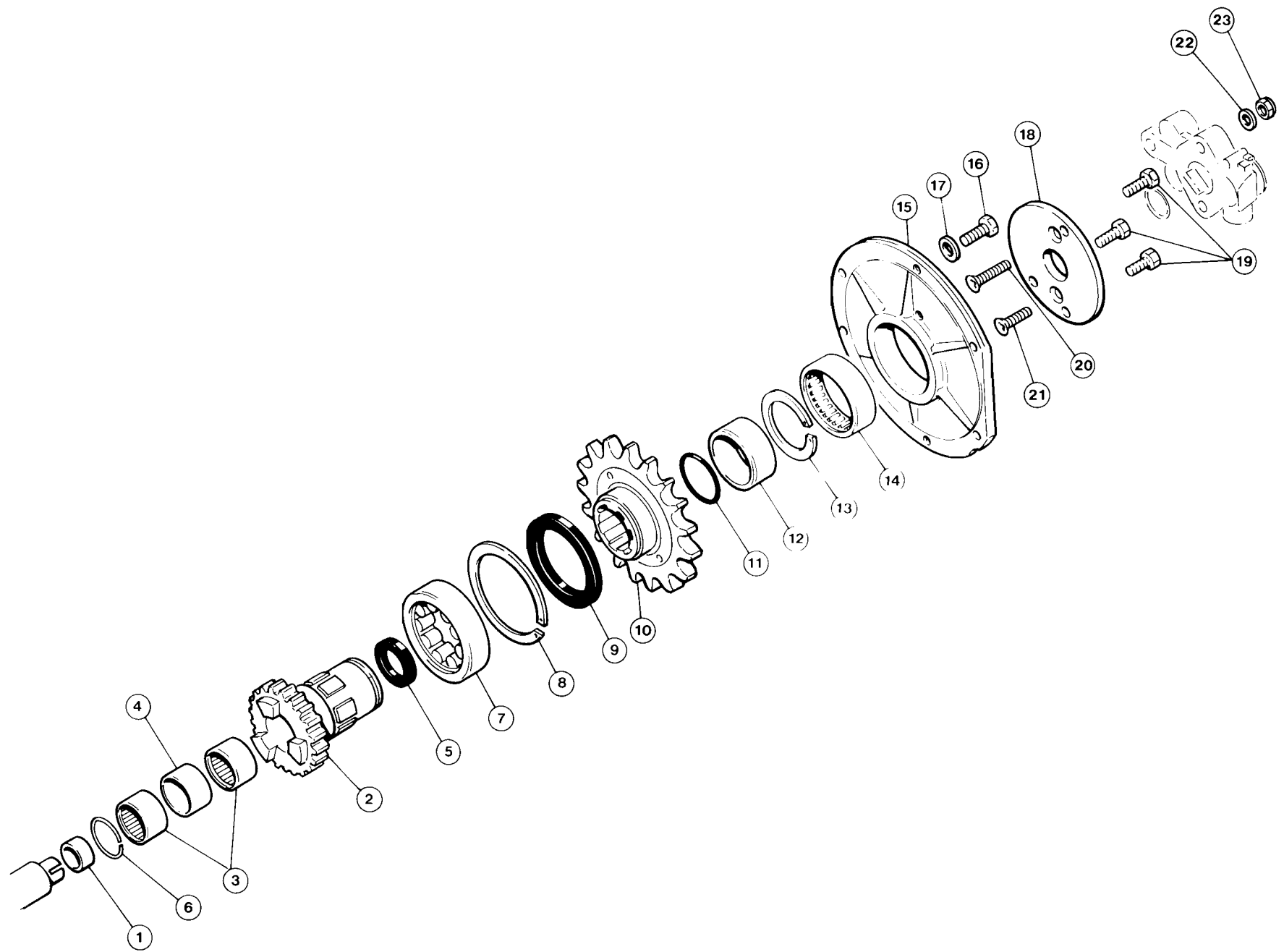
- 92-0092/031 size 3.1 nominal
- 92-0092/032 size 3.2 nominal
- 92-0092/033 size 3.3 nominal
- 92-0092/034 size 3.4 nominal
- 92-0092/035 size 3.5 nominal



GEARS, SHAFTS AND FITTINGS

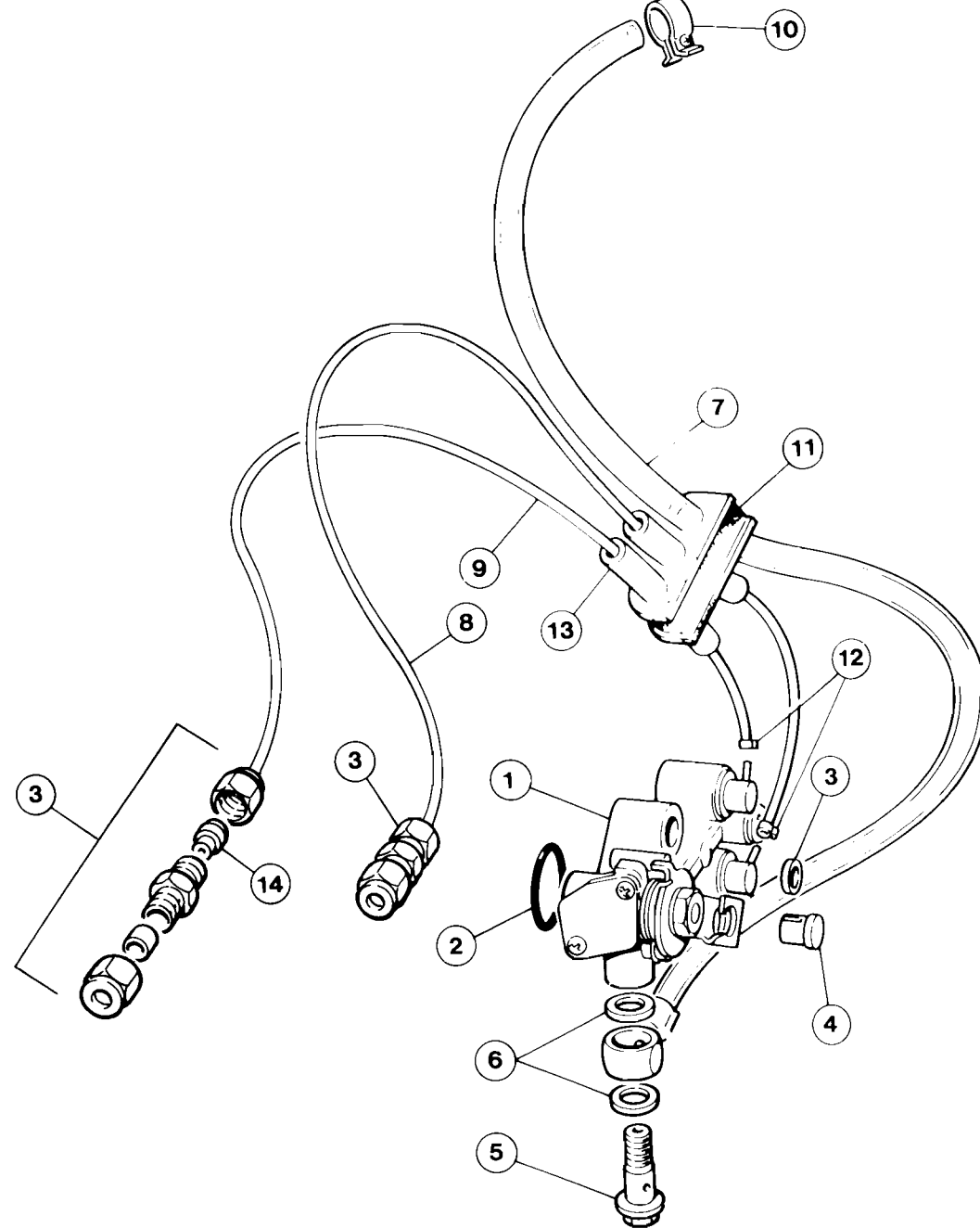
	Illus.No.	Part No.	Description	Qty
	1	55-0675	Mainshaft bearing right hand	1
	2	55-0457	Circlip - mainshaft bearing	2
	3	55-0421	Oil seal - mainshaft bearing	1
	4	55-0150	Layshaft bearing right hand	1
	5	69-0520	Camplate quadrant	1
	6	34-0131/000	Thrust washer	1
	7	69-0705	Pivot sleeve	1
	8	69-0643	Bush	
	9	55-0308	'O' ring	1
	10	23-1270/004	Camplate pivot bolt	1
	11	55-0362	Pivot bolt 'O' ring	1
	12	69-0545	Camplate assembly	1
	13	69-0794	Camplate plunger	1
	14	57-4459	Spring	1
	15	57-4227	Plunger housing nut	1
	16	69-0645	Plunger bush spacer	1
	17	57-3978	Aluminium washer	1
	18	57-3989	Selector fork rod	1
	19	57-4364	Selector fork - mainshaft	1
	20	57-4366	Selector fork - layshaft 3rd	1
	21	57-4660	Selector fork - layshaft 1st	1
	22	69-0777	Mainshaft $\frac{5}{8}$ " thread	1
	23	55-0148	Layshaft bearing left hand	1
	24	69-0565	Dowel (solid) right hand	2
	25	69-0742	Mainshaft 4th gear	1
	26	69-0748	Mainshaft 3rd gear assembly	1
	27	69-0804	Mainshaft 1st gear	1
	28	69-0802	Mainshaft 2nd gear	1
	29	69-0751	Layshaft assembly	1
	30	69-0739	Layshaft 3rd gear	1
	31	69-0807	Layshaft 2nd gear assembly	1
	32	69-0808	Layshaft 1st gear assembly	1
	33	55-0873	Circlip	1
	34	69-0806	Driving dog - layshaft 1st gear	1
	35	69-0506	Gearbox end cover	1
	36	34-0150/000	Screw (pan head)	2
	37	69-0651	Spacer	1

Note: Mainshaft 1st and 2nd gears should be replaced only as a complete set with Layshaft 1st and 2nd gears prior to gearbox No. 412.




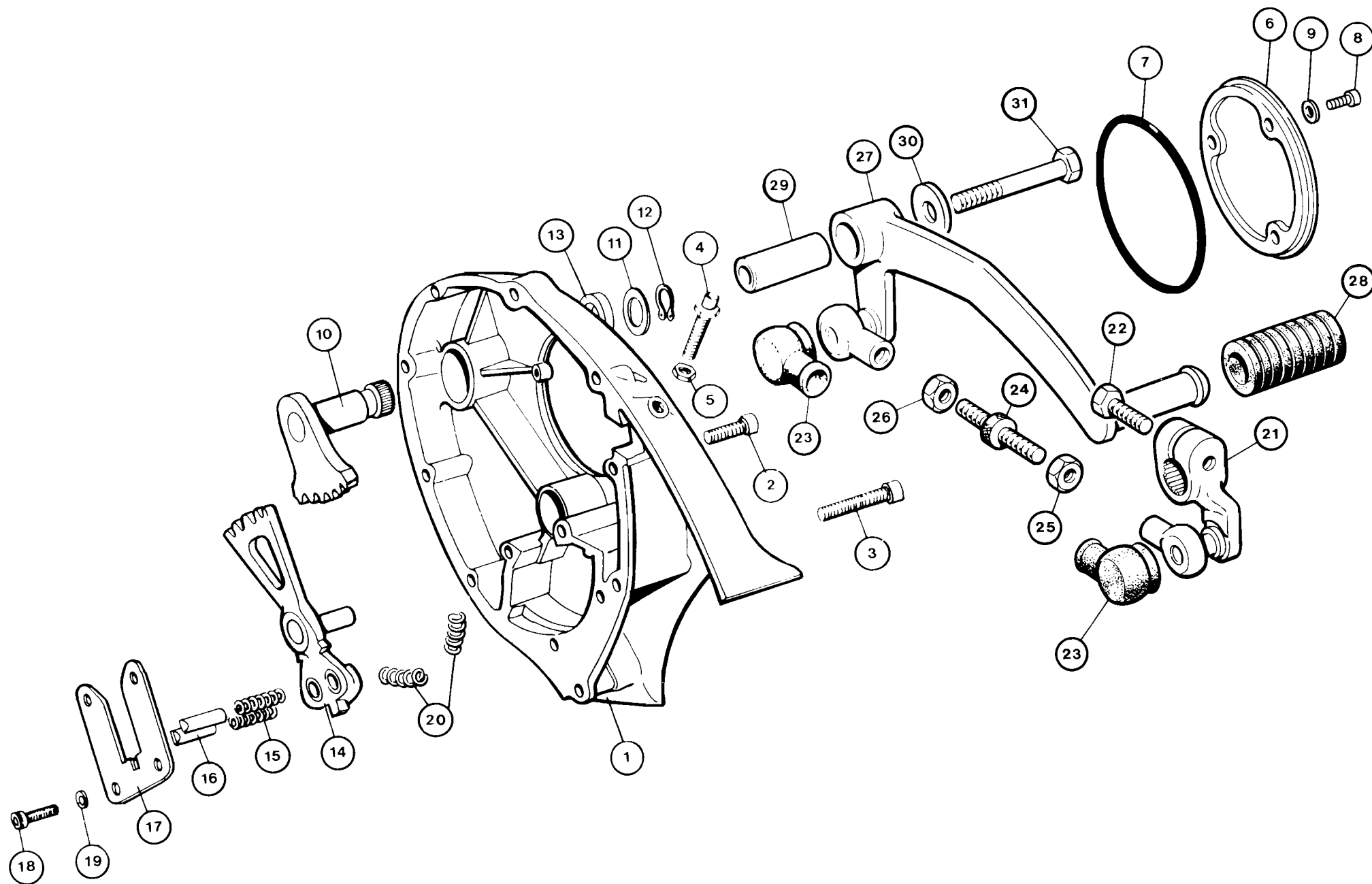
MAINSHAFT 5TH GEAR, GEARBOX SPROCKET AND SPROCKET COVER

Illus No	Part No	Description	Qty
1	69-0758	Sleeve	1
2	69-0745	Mainshaft 5th gear assembly	1
3	55-0151	Needle bearing	2
4	69-0757	Spacer	1
5	55-0841	Oil seal	1
6	69-0691	Circlip	1
7	55-0152	Mainshaft bearing left hand side	1
8	70-0489	Circlip - mainshaft bearing locating	1
9	55-0419	Oil seal - mainshaft left hand side	1
10	69-0703	Gearbox sprocket 17 tooth	1
11	55-0425	'O' ring	1
12	69-0756	Inner ring - outrigger bearing	1
13	55-0842	Circlip	1
14	55-0840	Outrigger bearing	1
15	69-0775	Sprocket cover plate	1
16	23-1034/000	Screw (M6x1x18 hex head)- cover plate to gearbox housing	6
17	23-1571/000	Washer plain M6	6
18	69-0776	Oil pump mounting plate	1
19	23-1012/000	Screw (M5x0.8x12) hex head	3
20	23-1471/000	Screw (M5x30 countersunk)	1
21	23-1469/000	Screw (M5x20 countersunk)	1
22	23-1555/004	Washer M5	2
23	23-2110/004	Nyloc M5	2



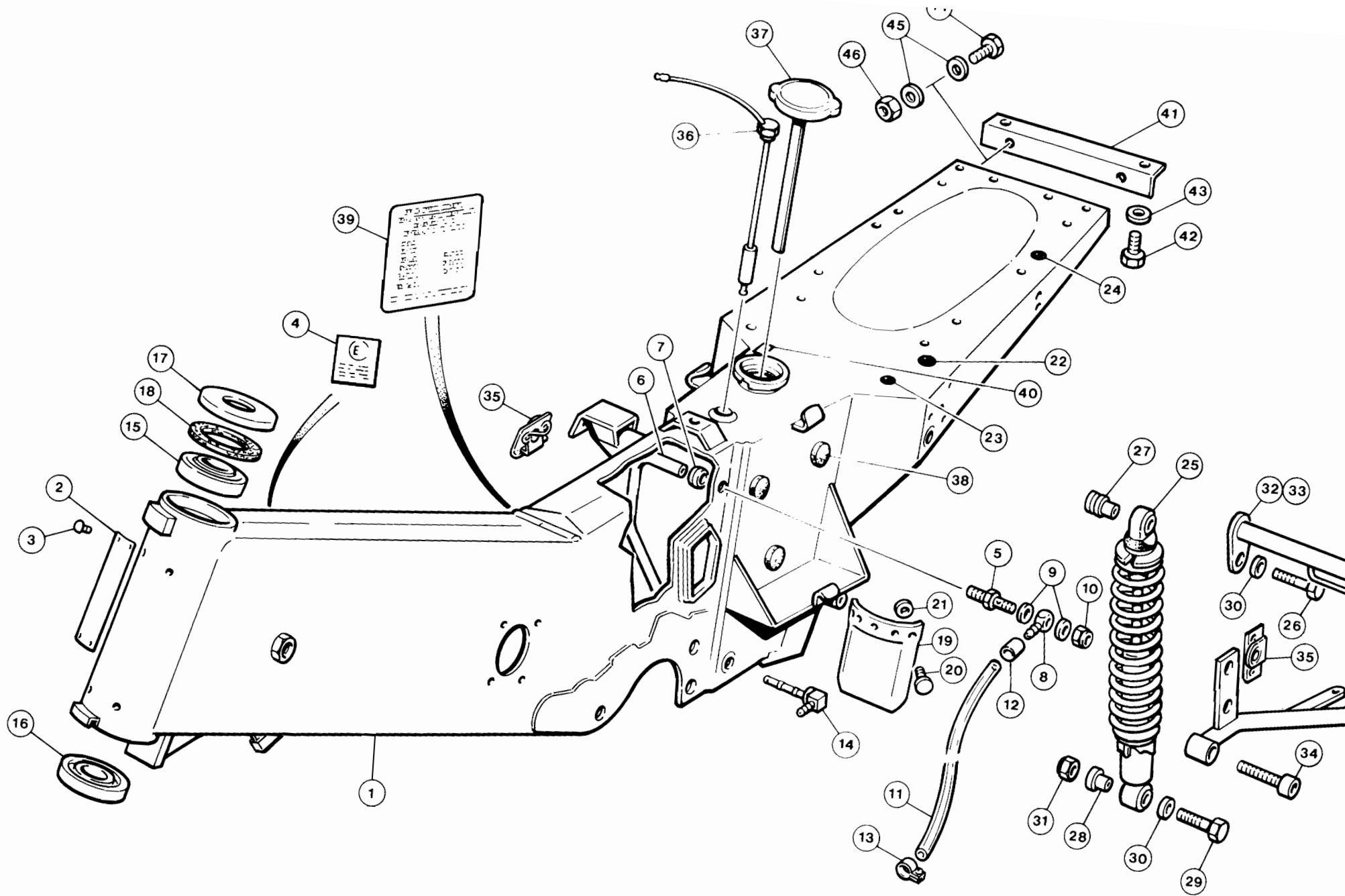
OIL PUMP AND PIPES

Illus.No. Part No.		Description	Qty		
1	55-0844	Oil pump	1		Available as an assembly Part No. 69-0815
2	55-0528	'O' ring	1		
3	55-1019	Equal ended coupling	2		
4	55-0532	Cable trunnion	1		
5	55-0530	Banjo bolt	1		
6	55-0531	Aluminium washer	2		
7	69-0733	Oil pipe - tank to pump	1		
8	50-0773	Oil pipe - pump to engine L.H.	1		
9	50-0775	Oil pipe - pump to engine - R.H.	1		
10	55-0412	Pipe clip	1		
11	50-0354	Rubber seal	1		
12	55-1020	Pipe clip	2		
13	69-0787	Spacing pipe	2		
14	55-1106	Connection olive	2		



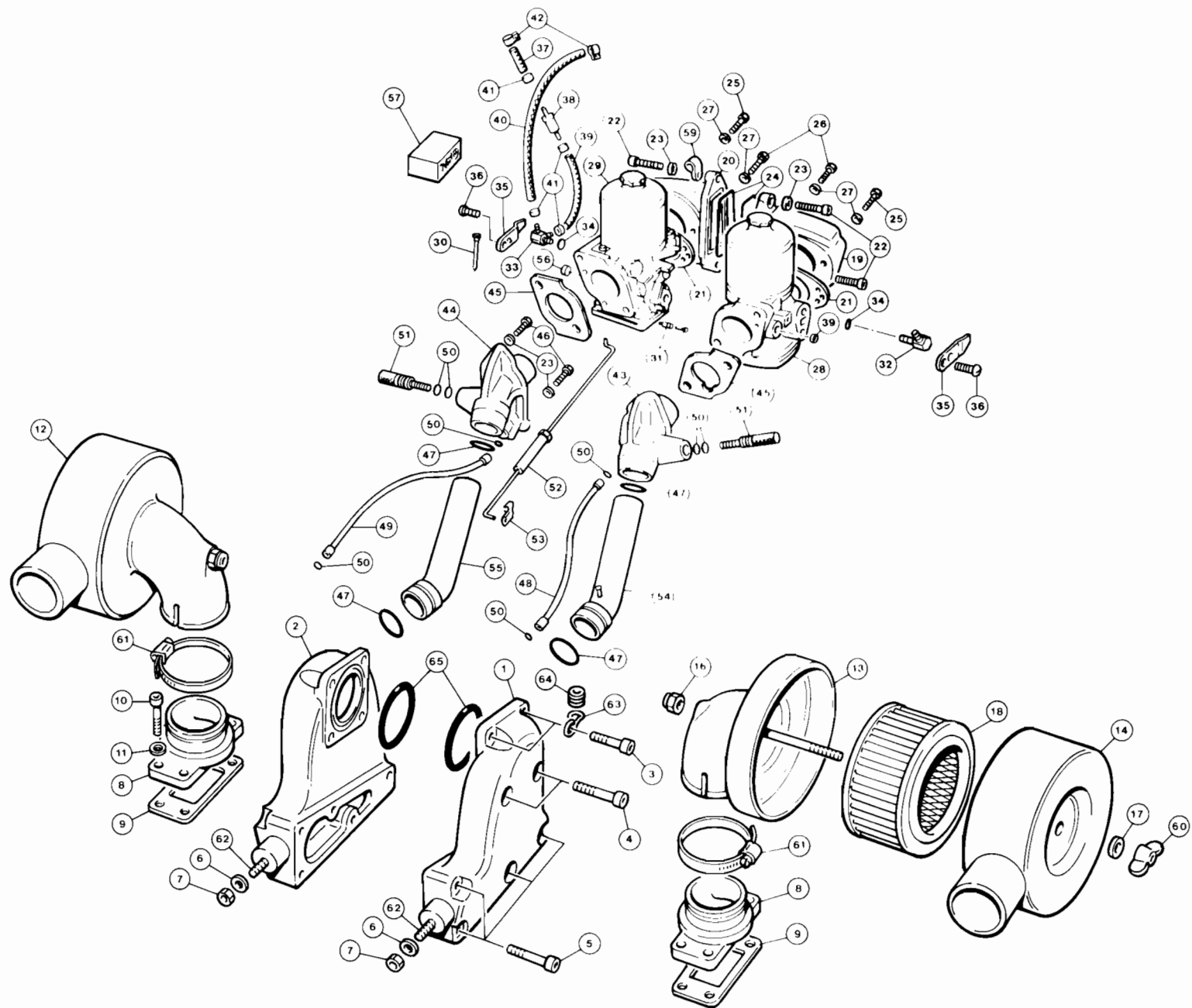
GEARBOX OUTER COVER AND GEARCHANGE MECHANISM

Illus. No. Part No.		Description	Qty
1	69-0799/008	Gearbox outer cover-left hand side	1
2	23-4249/870	Screw - socket cap (M6 1x40)	7
3	23-4251/870	Screw - socket cap (M6 1 x50)	2
4	92-0626	Cable adjuster - oil pump	1
5	34-0120/004	Nut(M8)	1
6	69-0629/011	Inspection cover oil pump	1
7	55-0422	'O' ring	1
8	23-4243/A2-70	Screw (M6 - socket cap)	3
9	55-0432	Nylon washer	3
10	69-0817	Gearchange pedal spindle assembly	1
11	34-0091	Shim - gearchange pedal spindle - 0.028 in	
	69-0656	Shim - gearchange pedal spindle - 0.048 in	1
12	69-0594	Circlip	1
13	55-0243	Oil seal gearchange spindle	1
14	69-0771	Gearchange plunger quadrant assembly	1
15	57-0405	Spring gearchange plunger	2
16	69-0696	Plunger	2
17	57-0407	Guide plate	1
18	23-1033/000	Screw (M6 Hex Head)	4
19	23-1521/000	Washer (M6 shakeproof - internal)	4
20	57-0404	Spring -pedal return	2
21	2H9-18112-00	Gearchange arm	1
22	97021-06020	Screw M6x20	1
23	2H9-18154-00	Dust Cover	2
24	4KO-18115-00	Adjuster rod	1
25	95303-06700	Nut M6 - thin	1
26	90170-06228	Nut M6 - thin L.H.	1
27	4KO-18111-02	Footchange pedal	1
28	132-18113-01	Pedal rubber	1
29	92-1818	Pivot tube	1
30	34-0236	Plain washer M6	1
31	23-1125/004	Bolt M6x45 Hex	1



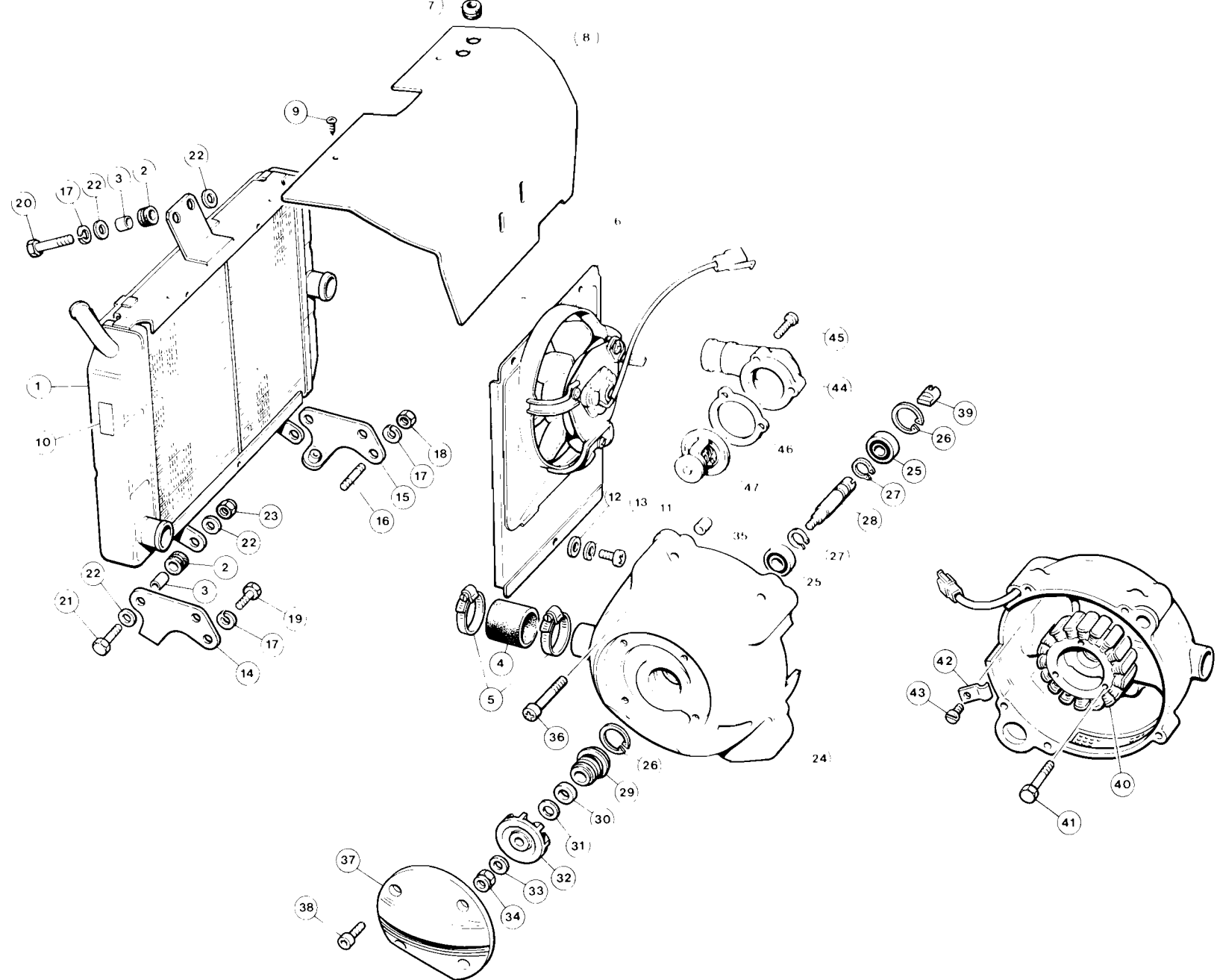
FRAME ASSEMBLY, SUSPENSION UNITS AND FITTINGS

Illus.No.	Part No.	Description	Qty	Illus.No.	Part No.	Description	Qty
1	92-1767/010	Frame assembly	1	25	55-1022	Rear suspension unit complete	2
2	92-0631	Certification label	1	26	23-1293/004	Suspension mounting bolt - top (M10x1.5x60 hex)	2
3	34-0126	Rivet	4	27	92-1741	Spacer - top suspension unit mounting	2
4	92-2092	E" mark decal	1	28	92-1736	Spacer - lower suspension unit mounting	2
5	92-0911	Adaptor	1	29	23-1163/004	Bolt (M10x1.5x45) stainless -lower	2
6	92-1792	Suction tube	1	30	23-1558/004	Spacer washers (M10) stainless	4
7	55-0324	Olive	1	31	23-2104/004	Nyloc nut (M10)	2
8	55-0529	Banjo connector	1	32	92-2354	Lifting handle - L.H	1
9	55-0432	Nylon washer	2	33	92-2355/010	Lifting handle - R.H	1
10	23-2111/004	Nyloc nut	1	34	23-4267	Screw (M6x16M)	2
11	92-2192	Flexible pipe - frame drain	1	35	55-0552	Dzus plate	4
12	69-0609	Ferrule	1	36	55-0575	Oil level warning unit	1
13	55-0412	Pipe clip	1	37	55-0544	Oil filler cap with dipstick	1
14	55-0376	Oil filter assembly	1	38	55-0547	Rubber buffer for battery	6
15	55-0357	Upper steering head bearing	1	39	92-1467	Patents decal	1
16	93332.00008	Lower steering head bearing	1	40	92-2002	Oil tank label	1
17	92-2088	Upper dust shield cup	1	41	92-2180	Grab rail Support	1
18	92-0212	Felt dust sheild	1	42	23-1042/004	Screw (M8x20)	2
19	92-0209	Mud deflector - rear	1	43	23-1557/004	Plain washers (M8)	2
20	55-0393	Rivet (black nylon)	5	44	23-1033/004	Screw (M6x16)	4
21	55-0394	Rivet Retainer	5	45	23-1556/004	Plain washer (M6)	8
22	55-0710	Grommet	4	46	23-2102/004	Nyloc nut (M6) Type P	4
23	55-0712	Grommet	1				
24	55-0711	Grommet	4				



AIR FILTERS, TRANSFER PORTS, CARBURETTER AND INLET PIPES

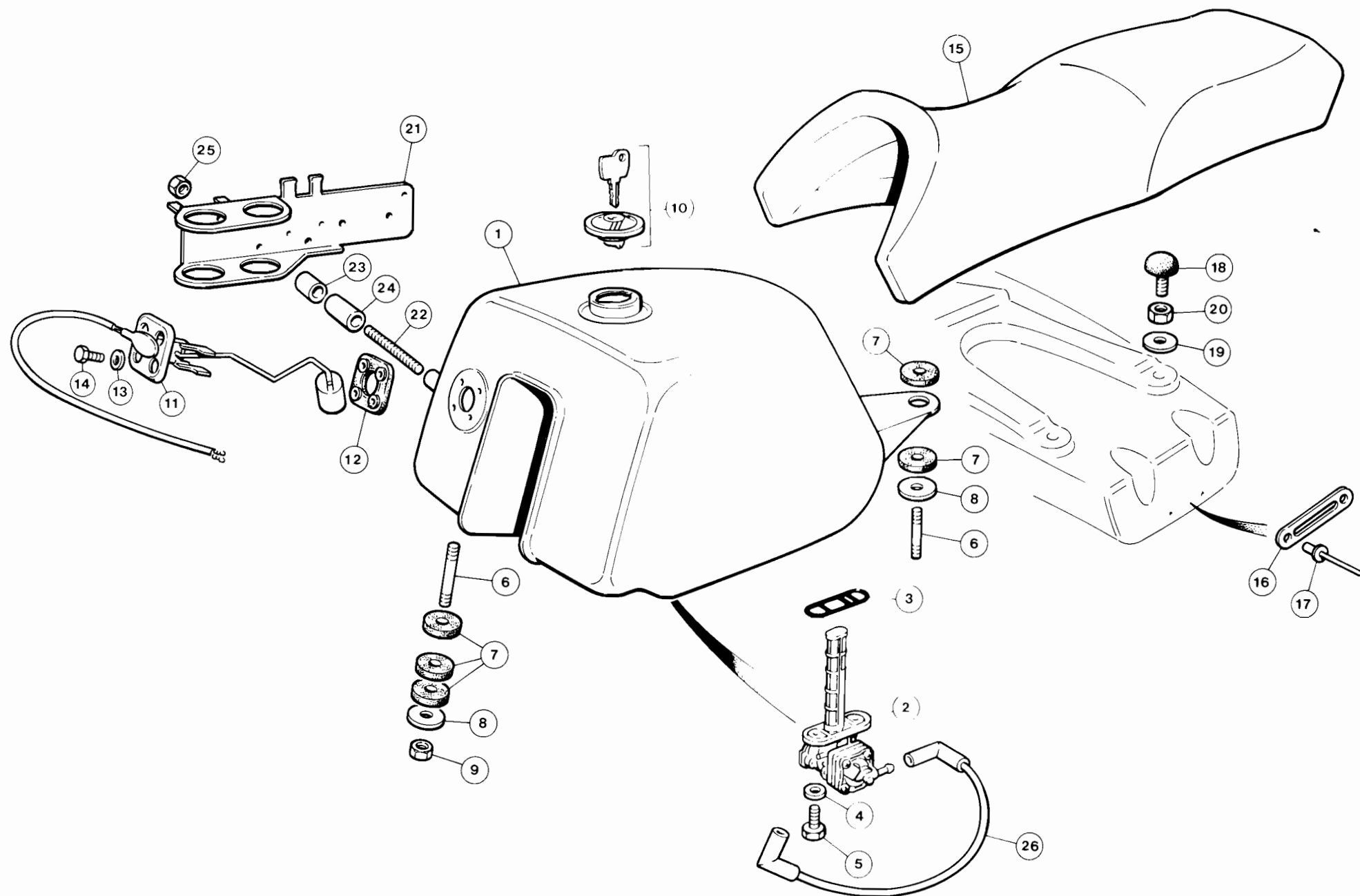
Illus.No.	Part No.	Description	Qty	Illus.No.	Part No.	Description	Qty
1	92-2364	Transfer port - left hand	1	32	92-0506	Fuel feed union, left hand	1
2	92-2363	Transfer port - right hand	1	33	50-0701	Fuel feed union, right hand	1
3	23-1266/004	Screw (M8x25)	4	34	55-0451	'O' ring - fuel feed union	2
4	23-1269/004	Screw (M8x40) socket head	4	35	50-0617	Retaining plate	2
5	23-1250/004	Screw (M6x45) socket head	10	36	34-0283/A2-70	Screw M5	2
6	34-0233	Large washer (M6)	2	37	92-2173	Fuel pipe - tap to filter	1
7	23-2102	Nyloc nut (M6)	2	38	55-0834	In line filter	1
8	92-2114	Mounting for filter housing	2	39	92-2172	Fuel pipe - filter to carburetter union	1
9	92-2113	Insulator	2	40	92-0476	Balance pipe	1
10	23-1246/004	Screw (M6x25) socket head	8	41	55-0198	Ferrule	4
11	23-1556/004	Plain washer (M6)	8	42	55-0414	Clip	2
12	92-2116	Filter housing complete	2	43	50-0793	Carburetter outlet manifold left hand	1
13	92-2117	Backplate	2	44	50-0794	Carburetter outlet manifold right hand	1
14	92-2118	Cover plate	2	45	50-0374	Carburetter gasket - outlet manifold	2
15	92-2174/004	Stud (M6)	2	46	23-1042/004	Screw (M8 hex head)	2
16	23-2111/004	Nyloc nut (M6) Type 'T'	2	47	55-0418	'O' ring	4
17	34-0236	Plain washer	2	48	50-0530	Idle mixture pipe - left hand	1
18	55-1199	Filter element	2	49	50-0531	Idle mixture pipe - right hand	1
19	50-0146	Carburetter Inlet manifold - left hand	1	50	55-0362	'O' ring	8
20	50-0123	Carburetter Inlet manifold - right hand	1	51	50-0573	Adjusting screw - idle speed	2
21	50-0483	Carburetter gasket - inlet manifold	2	52	50-0781	Fast idle rod assembly	1
22	23-1266/004	Screw (M8)	4	53	55-0525	Control rod clip	1
23	23-1557/004	Plain washer (M8)	8	54	50-0746	Inlet pipe assembly left hand	1
24	55-0267	'O' ring carburetter inlet manifold	2	55	50-0747	Inlet pipe assembly - right hand	1
25	14-6223/004	Bolt $\frac{1}{16}$ in U.N.C. x 2 $\frac{1}{2}$ in	2	56	55-0833	Anti tamper plug	2
26	14-6224/004	Bolt $\frac{1}{16}$ in U.N.C. x 2 $\frac{3}{4}$ in	2	57	55-0715	Carburetter spares pack	A/R
27	23-1557/004	Plain washer	4	58	55-0991	Carburetter damper piston assembly (Not illus.)	A/R
28	55-0444	Carburetter assembly left hand (S.U. FZX 133L)	1	59	55-0535	Cable clip	1
29	50-0445	Carburetter assembly right hand (S.U. FZX 133R)	1	60	55-1216	Wing nut (M6)	2
30	55-0818	Needle 51XA - (NZX4030)	2	61	55-1217	Hose clamp	2
31	55-0413	Choke cable nipple	2	62	34-0331	Stud (M6x28)	2
				63	92-2378	Cable guide clip	1
				64	55-0455	Grommet	1



RADIATOR AND WATER PUMP

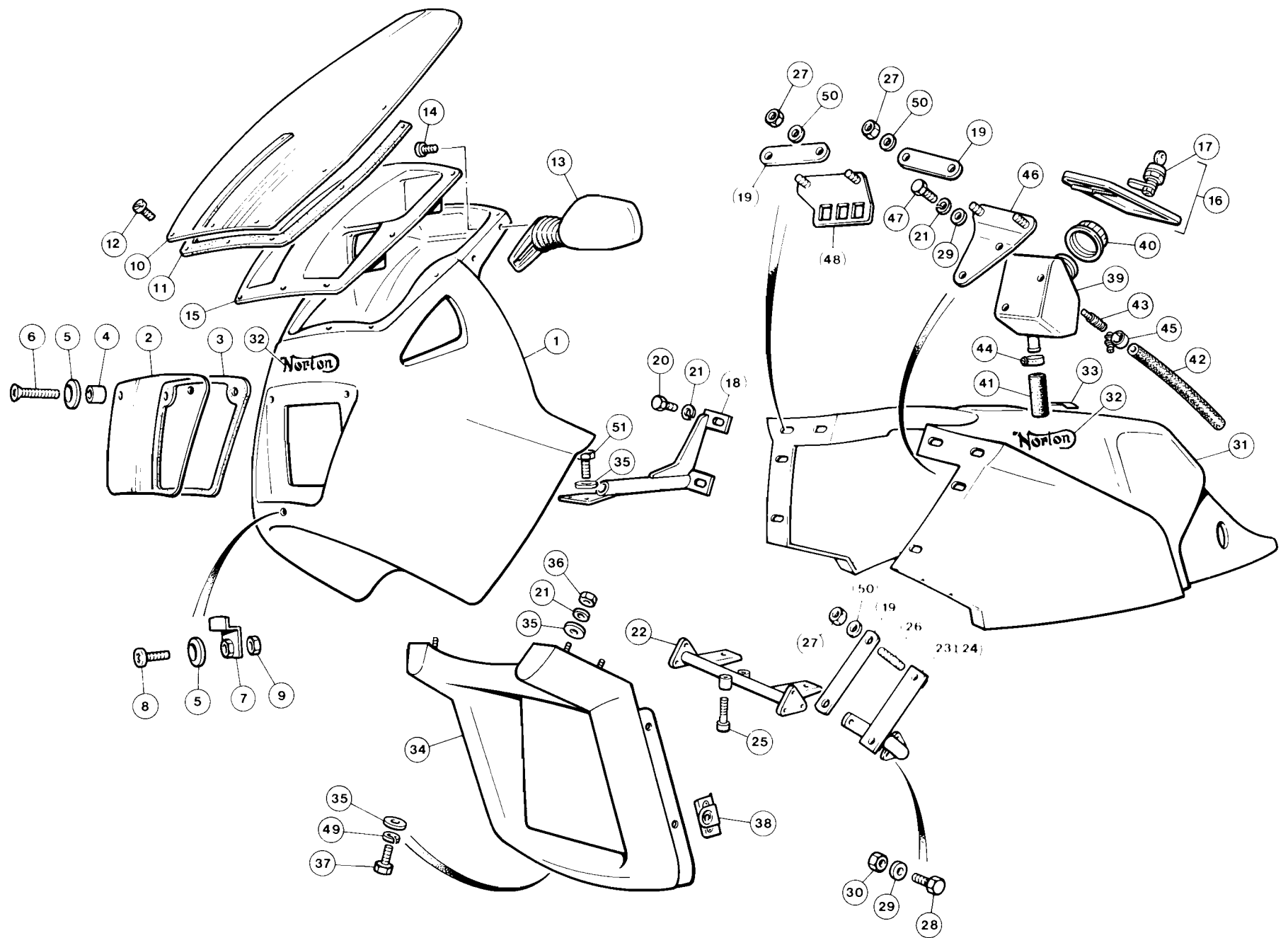
Illus.No.	Part No.	Description	Qty	Illus.No.	Part No.	Description	Qty
1	92-1739	Radiator	1	26	55-0862	Outer circlip	2
2	92-1749	Grommet	4	27	55-0868	Inner circlip	2
3	92-1753	Sleeve	4	28	50-0681	Spindle	1
4	92-2257	Hose	2	29	55-1109	Seal	1
5	55-1281	Hose clip	4	30	34-0320	Distance piece (3mm)	1
6	92-1817	Fan cowl and Blower unit	1	31	★50-0684	Shim (0.25mm)	1
7	55-1280	Grommet	2	32	50-0683	Impeller	1
8	92-2110	Baffle	1	33	23-4557	Plain washer (M8x18x1.6 thick)	1
9	34-0164	Screw - self tap No. 10	2	34	23-2112/004	Nyloc nut (M8)	1
10	92-2203	Decal – fan warning	2	35	57-0989	Dowel	2
11	23-1365/004	Screw (M5x12) recessed pan head	3	36	23-4249	Screw (M6x40) cap head	5
12	23-1604/004	Plain washer (M5)	3	37	50-0789/008	Cover plate	1
13	23-1502/004	Spring washer (M5)	3	38	23-4243	Screw (M6x16)	4
14	92-2098	Radiator bracket - left hand	1	39	50-0676	Drive coupling	1
15	92-2103	Radiator bracket - right hand	1	40	55-1397	Stator	1
16	34-0315/004	Stud 1/4in UNF x 23	2	41	23-1124/004	Screw (M6x40)	3
17	23-1605/004	Spring washer (M6)	6	42	92-2201	Clip	1
18	34-0306/004	Nut 1/4in UNF	2	43	23-1353/004	Screw (M4x8)	1
19	23-1032/004	Screw (M6x1)	2	44	50-0674/008	Housing	1
20	23-1034/004	Screw (M6x18)	2	45	23-1226/004	Screw (M5) socket head	3
21	23-1035/004	Screw (M6x20)	2	46	50-0675	Gasket	1
22	34-0236	Plain washer (M6)	6	47	55-1108	Thermostat	1
23	23-2102/004	Nyloc nut (M6) type 'P'	2				
24	50-0788/008	Pump housing	1				
25	55-0928	Bearing	2				

★ Alternative thickness shims available
 (note:- only one should be fitted)
 50-0685 Shim (0.50mm)
 50-0686 Shim (1.0 mm)



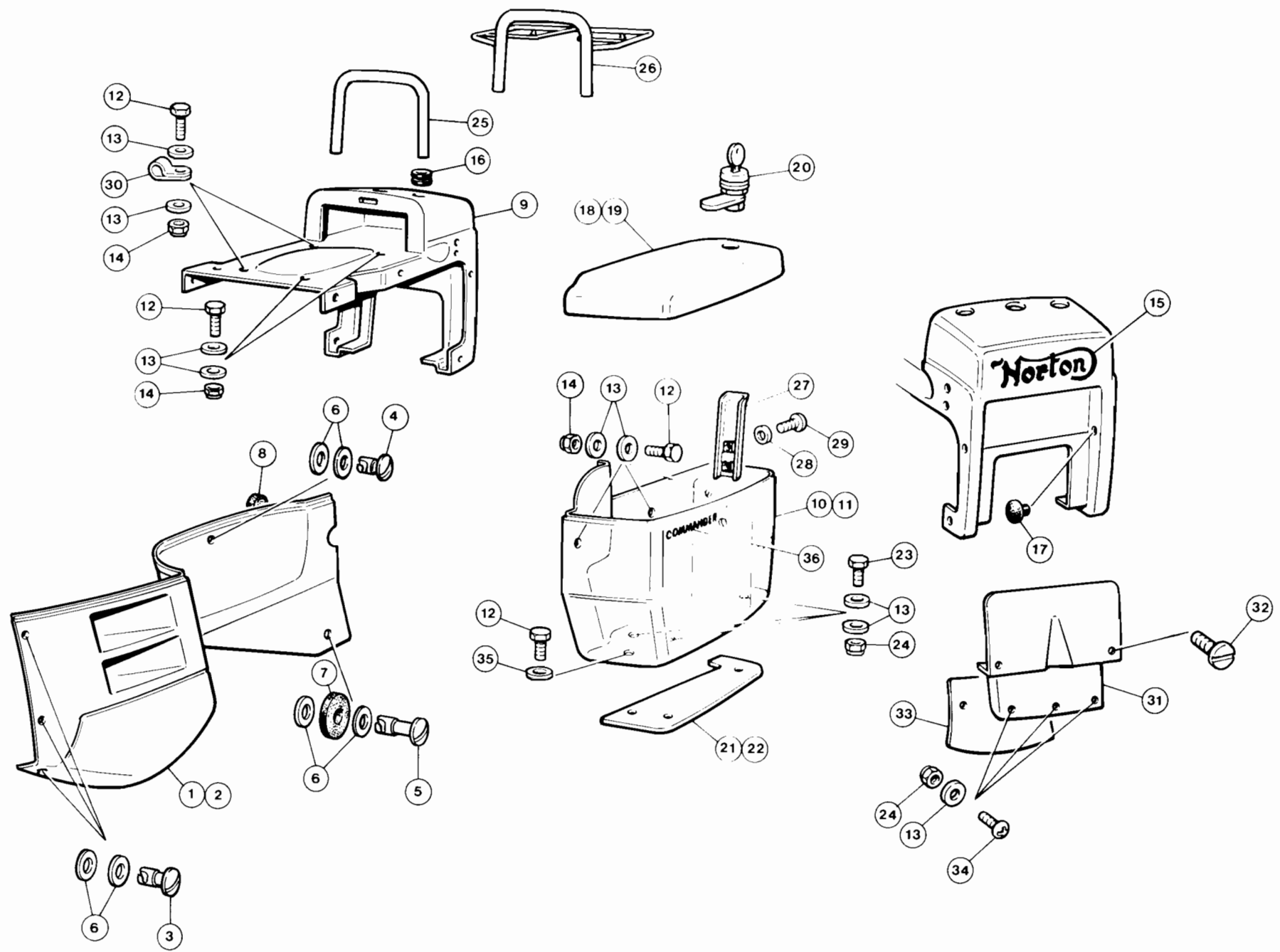
FUEL TANK AND SEAT

Illus.No. Part No.		Description	Qty
1	92-2112	Fuel tank	1
2	92-1783	Fuel tap	1
3	55-0595	Sealing ring	1
4	34-0210	Fibre washer sealing (M6)	2
5	23-1034/004	Screw (M6x18)	2
6	34-0310	Stud (M8)	3
7	92-1242	Rubber washer	8
8	34-0222/004	Plain washer (M8 - large)	3
9	23-2103/004	Nut (M8 - Nyloc)	2
10	92-1769	Fuel tank filler cap c/w lock and keys	1
11	92-2274	Sender unit complete	1
12	563-85753-00	Gasket	1
13	23-1502/004	Plain washer (M5)	4
14	23-1365/004	Screw (M5x12) recessed pan head	4
15	92-2358	Seat	1
16	92-2357	Lock plate	1
17	34-0278	Pop rivet	2
18	92-1015	Buffer	2
19	34-0236	Plain washer	2
20	23-2002/004	Nut (M6x1)	2
21	92-2177	Mounting plate	1
22	34-0317	Stud (M5x0.8x70)	3
23	55-0363	Spacer bush (short)	3
24	55-0550	Spacer bush (long)	3
25	23-2101/004	Nyloc nut (M5-type 'P')	3
26	92-2243	Vacuum pipe	1



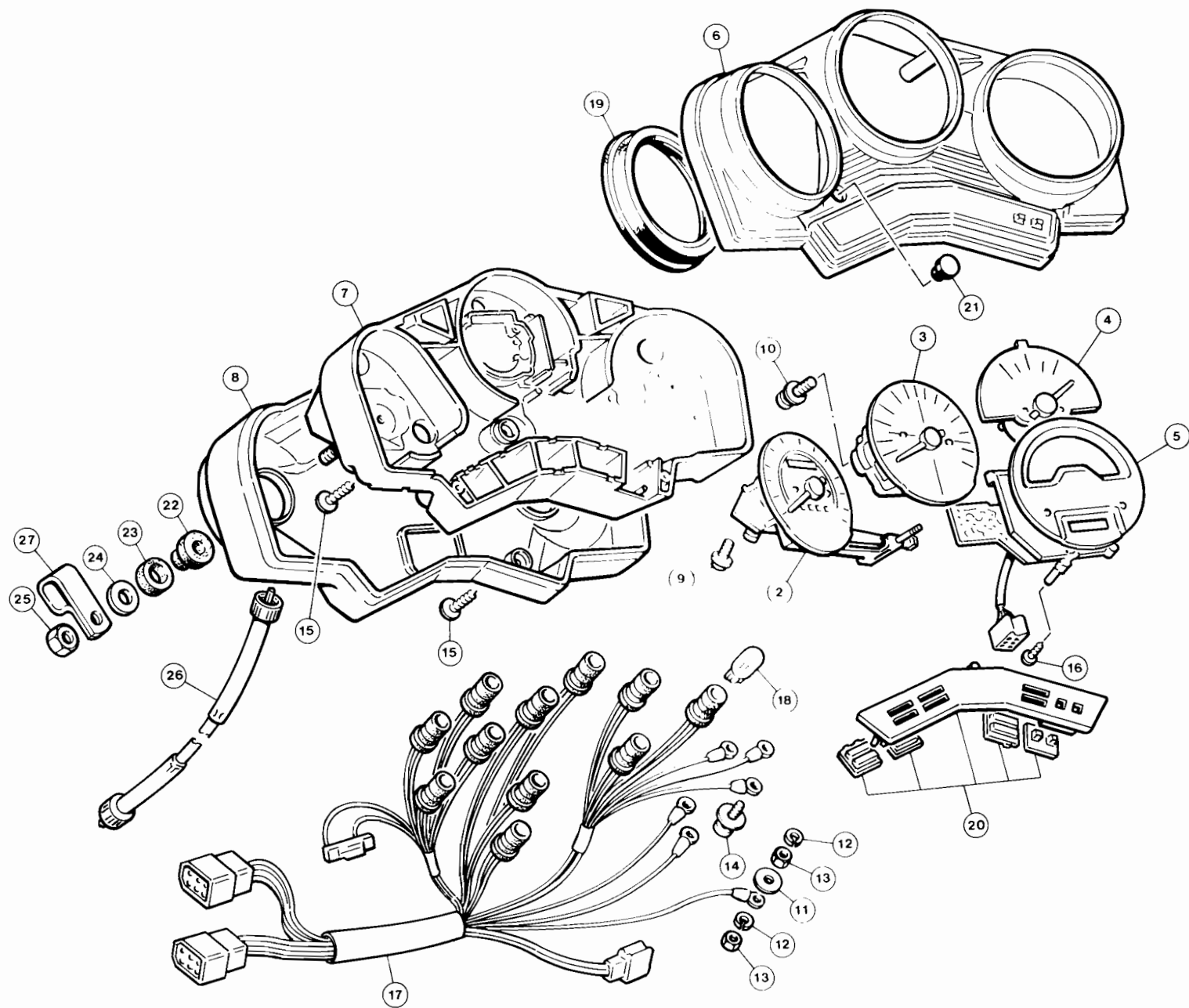
FRONT FAIRING AND TANK COVER

Illus.No.	Part No.	Description	Qty	Illus.No.	Part No.	Description	Qty
1	92-2064/204	Front fairing	1	27	23-2103/004	Nut (M8) Nyloc	8
2	92-1833	Headlamp glass	1	28	23-1033/004	Screw (M6x16) hex	6
3	92-2142	Gasket	1	29	23-1566/004	Plain washer (M6)	8
4	55-1229	Nylon spacer	2	30	23-2102/004	Nut (M6) Nyloc - type 'P'	6
5	55-1221	Nylon washer	2	31	92-2124/204	Tank cover complete	1
6	23-4459	Screw (M4x25) c/sunk - posidrive	2	32	92-2125	Norton decal-red	3
7	92-2197	Clamp	1	33	92-2126	Fuel decal	1
8	23-4357	Screw (M4x12) pan head	1	34	92-2068/204	Radiator surround	1
9	34-0256	Nut (M4)	1	35	34-0236	Plain washer (M6)	10
10	92-2077	Screen	1	36	23-2002/004	Nut (M6) hex	4
11	92-2143	Gasket	1	37	23-1035/004	Screw (M6x20)	4
12	34-0235	Plastic screw	7	38	55-0552	Dzus plate	6
13	55-1372	Mirror	2	39	92-2184	Header tank	1
14	23-1368/004	Screw (M5x20) pan head	4	40	55-1196	Pressure cap	1
15	92-2277	Front lamp panel	1	41	92-2161	Hose	1
16	92-2066/204	Lid and lock assembly	2	42	92-2162	Pipe	1
17	55-1399	Lock and key (2) assembly	2	43	92-2261	Union	1
18	92-2123	Front fairing bracket	1	44	55-1137	Clip	2
19	92-2147	Clamp plate	4	45	55-1283	Clamp	2
20	23-1032/004	Screw (M6x1) hex	4	46	92-2252	Tank mounting bracket	1
21	23-1605/004	Spring washer (M6)	10	47	23-4031	Screw (M6x10)	2
22	92-2370	Centre section - main fairing bracket	1	48	92-2249	Wiring harness bracket	1
23	92-2369	Left section - main fairing bracket	1	49	34-0336	Spring washer	2
24	92-2371	Right section - main fairing bracket	1	50	23-1557/004	Plain washer (M8)	8
25	23-4266	Screw (M8x25) socket head	2	51	23-4033	Screw (M6x16)	2
26	34-0312	Stud (M8x28)	4				



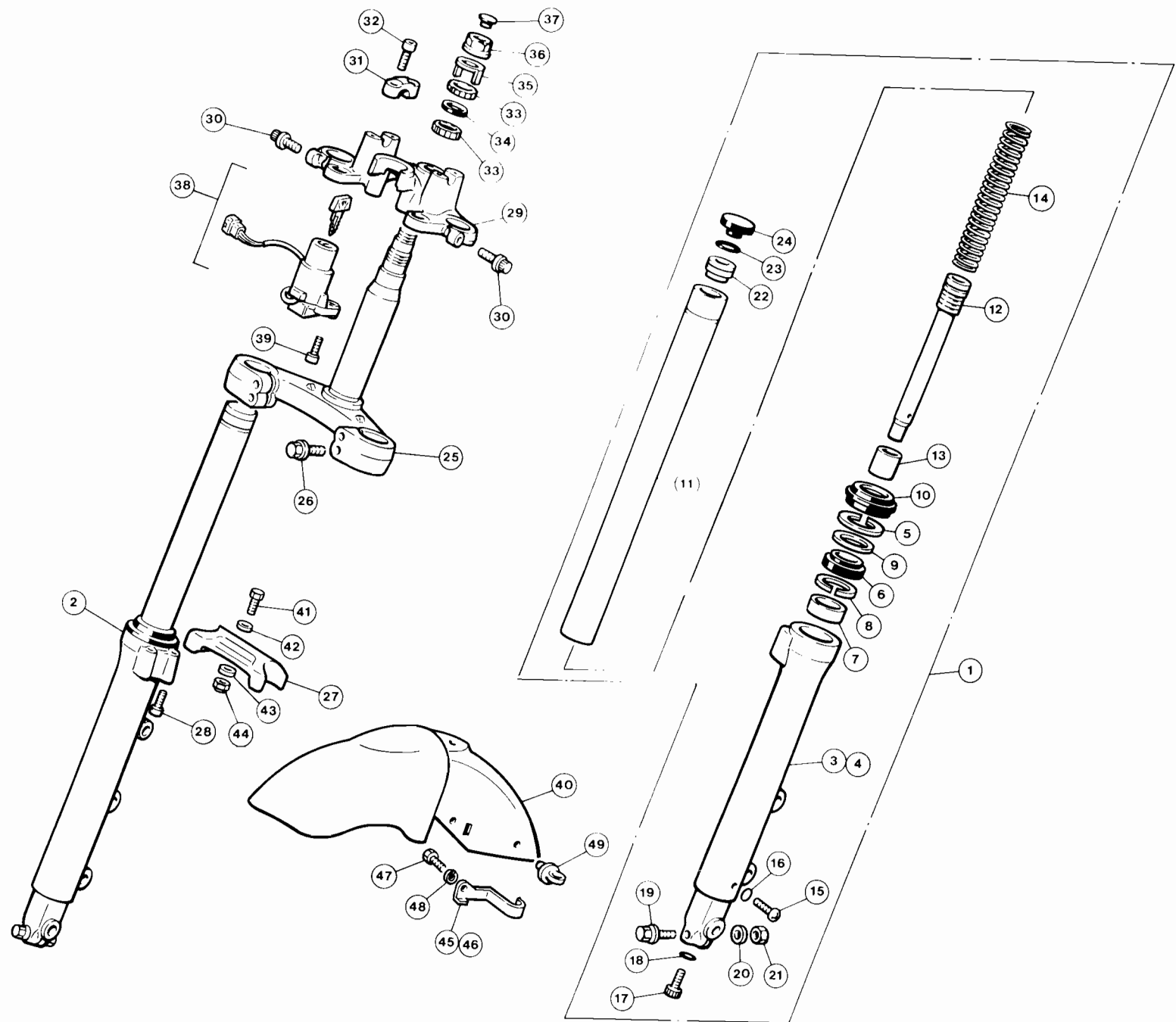
SIDE PANELS, TAIL UNIT AND PANNIERS

Illus.No.	Part No.	Description	Qty	Illus.No.	Part No.	Description	Qty
1	92-2074/204	Side panel - LH	1	18	92-2169/204	Pannier lid complete - left hand	1
2	92-2075/204	Side panel - RH	1	19	92-2226/204	Pannier lid complete - right hand	1
3	55-1208	Dzus stud	6	20	55-1399	Lock and key (2) assembly complete	2
4	55-1228	Dzus stud	2	21	92-2299	Heat shield - left hand	1
5	55-1209	Dzus stud	2	22	92-2298	Heat shield - right hand	1
6	55-0554	Retaining washer	20	23	23-4375	Screw M6x16	6
7	92-1242	Rubber washer	2	24	23-5111	Nyloc nut M6	9
8	92-1590	Buffer	6	25	92-2179/010	Grab rail	1
9	92-2166/204	Tail unit	1	26	92-2382/010	Grab rail with luggage grid	A
10	92-2167	Pannier box - left hand	1	27	92-2352	Retaining plate	2
11	92-2168	Pannier box - right hand	1	28	23-1555/004	Plain washer (M5)	4
12	23-1033/004	Screw (M6x16 hex)	12	29	23-1365/004	Screw (M5x12) recessed pan head	4
13	34-0236	Plain washer	42	30	55-0535	'P' clip	2
14	23-2111/004	Nut - nyloc (type 'T')	10	31	92-2070	Rear number plate panel	1
15	92-2125	Decal 'Norton' - red	1	32	23-4375	Screw (M6x16)	4
16	55-1325	Grommet	5	33	92-2189	Mudflap	1
17	55-0836	Blanking grommet	2	34	23-4373	Screw (M6x12)	3
				35	34-0233	Plain washer M6	6
				36	92-2154	Decal 'Commander' (Red)	2



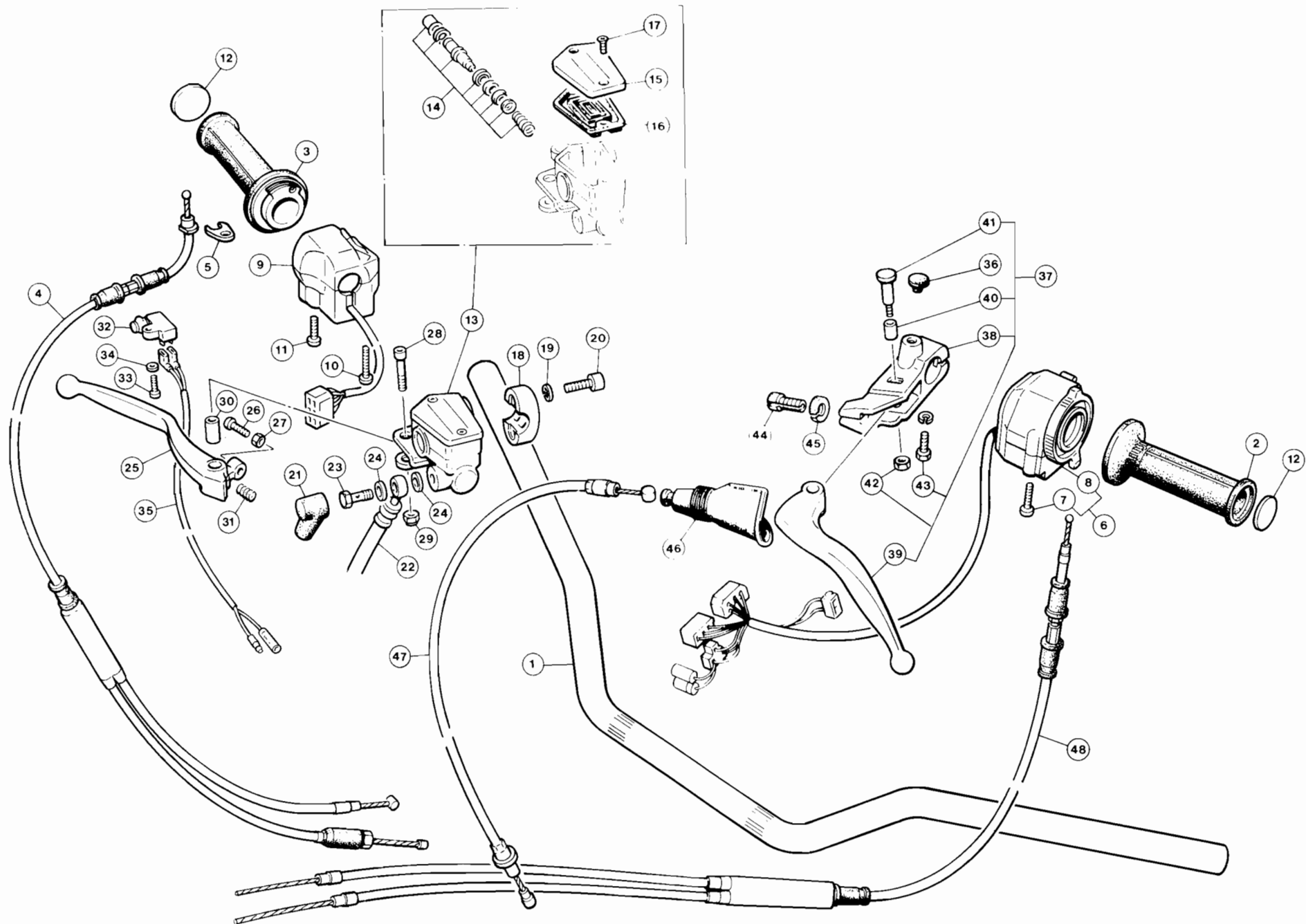
INSTRUMENTS AND INSTRUMENT CASE

Illus.No. Part No.		Description	Qty	
1	92-2270	Instrument console complete	1	} Not available except as a complete unit.
2	41Y-83570-GO	Speedometer unit	1	
3	29R-83540-00	Tachometer unit	1	
4	29R-85750-00	Fuel gauge	1	
5	31A-83740-00	Digital clock	1	
6	31A-8353G-00	Upper case	1	
7	31A-8353H-00	Inner case	1	
8	31A-83559-00	Lower case	1	
9	90167-04021	Screw - self tap	2	
10	90159-04043	Screw with washer	2	
11	92902-03600	Plain washer	3	
12	92990-03100	Spring washer	4	
13	95301-03600	Nut	4	
14	90159-03044	Screw with washer	3	
15	90164-04006	Screw - self tap	7	
16	90164-03010	Screw - self tap	3	
17	31A-83509-00	Wiring harness	1	
18	4G1-84744-00	Bulb (12v 3.4w)	11	
19	31A-8353L-00	Reflector	3	
20	31A-8357X-00	Panel assembly	1	
21	29L-83578-00	Knob - for trip meter	1	
22	31A-83592-00	Damper bush	2	
23	31A-83593-00	Damper bush	2	
24	90201-060A3	Plain washer	2	
25	95303-06600	Nut	2	
26	2GH-83550-00	Speedometer cable	1	
27	55-0535	Wiring harness cable clip	2	



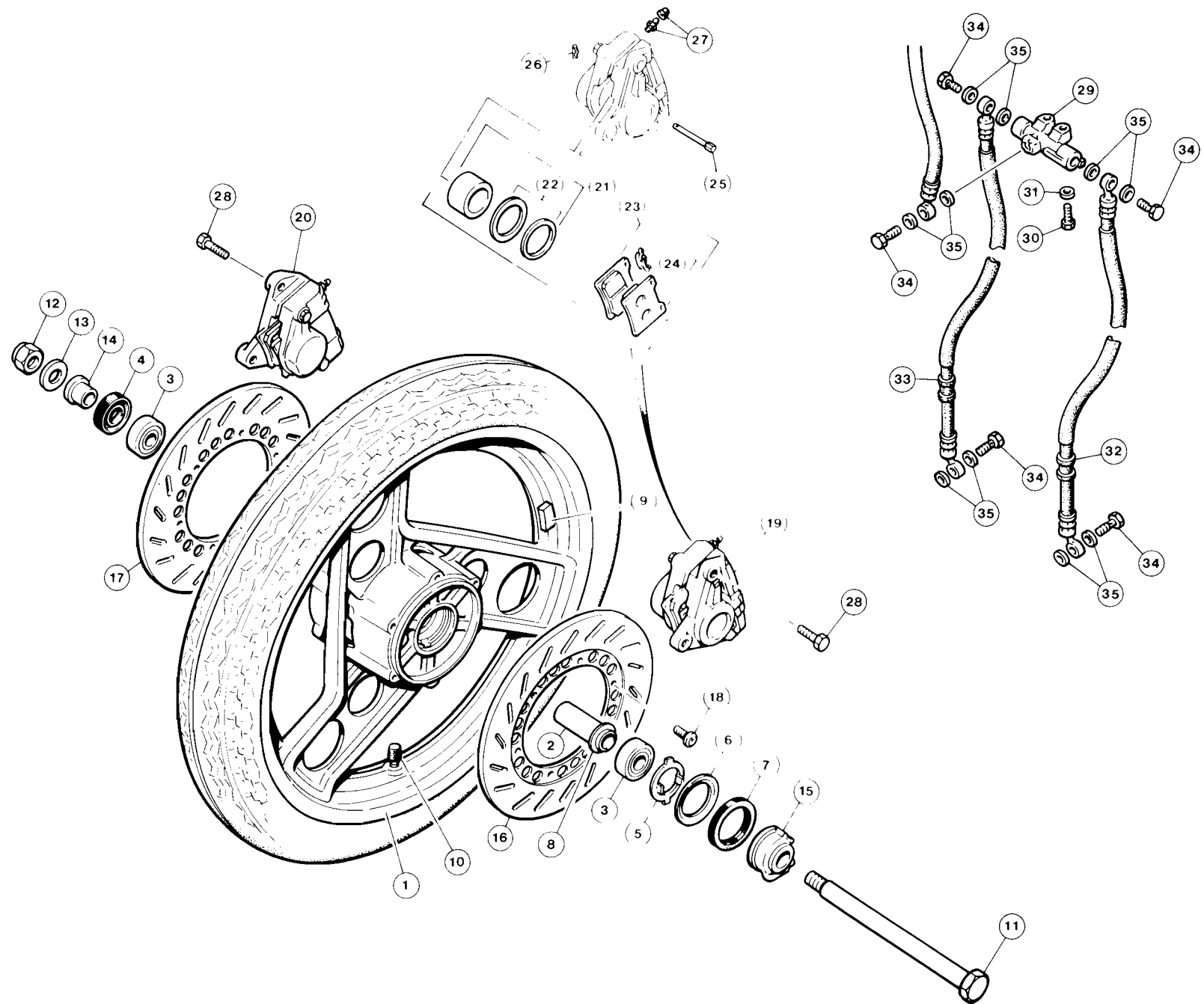
FRONT FORK

Illus.No.	Part No.	Description	Qty	Illus.No.	Part No.	Description	Qty
1	3KH-23102-00	Front fork leg assembly (L.H.)	1	26	90119-08012	Bolt - hex head with washer	4
2	3KH-23103-00	Front fork leg assembly (R.H.)	1	27	31A-2313A-30	Fork brace	1
3	4IY-23126-00	Fork slider (L.H.)	1	28	31A-23181-30	Bolt - socket head	4
4	4IY-23136-00	Fork slider (R.H.)	1	29	1FW-23435-98	Top yoke	1
5	3R4-23153-00	Snap ring	2	30	95826-08045	Flanged bolt	2
6	4IY-23145-00	Oil seal	2	31	4H7-23441-00	Handlebar clamp	2
7	31A-23125-31	Bearing	2	32	23-1267/004	Bolt (M8x30) socket head	4
8	31A-23149-31	Upper spring washer	2	33	90179-25033	Locknut	2
9	4IY-23146-00	Oil seal washer	2	34	90202-26142	Rubber sealing washer	1
10	4IY-23144-00	Dust seal	2	35	26H-23418-01	Tab washer	1
11	4IY-23110-00	Fork tube	2	36	90179-22412	Stem top nut	1
12	4IY-23170-00	Inner cylinder	2	37	55-0237	Blanking plug	1
13	5A8-23173-00	Taper spindle	2	38	92-2273	Ignition switch assembly	1
14	3KH-23141-00	Fork spring	2	39	23-1245/004	Screw (M6x20) socket head	2
15	122-23119-01	Drain plug	2	40	92-2076	Front mudguard	1
16	122-23129-00	'O' ring	2	41	23-1121/004	Bolt (M6x25)	2
17	278-23181-50	Base plug bolt	2	42	23-1556/004	Plain washer	2
18	509-23158-LO	'O' ring	2	43	34-0236	Plain washer	2
19	4U8-23356-10	Clamp bolt	2	44	23-2102/004	Nyloc nut (M6) type 'P'	2
20	90201-08544	Plain washer	4	45	31A-21523-00	Backing plate - left hand	1
21	95311-08600	Nut	2	46	31A-21524-00	Backing plate right hand	1
22	31A-23111-31	Fork tube top plug	2	47	23-1035/004	Screw (M6x20)	2
23	IWI-23114-LO	'O' ring	2	48	23-1605/004	Spring washer	2
24	26H-23168-00	Sealing cap	2	49	55-0348	Grommet - for speedometer cable	1
25	1FW-23340-00	Fork bottom yoke and stem	1				



HANDLEBAR, CONTROLS AND CABLES

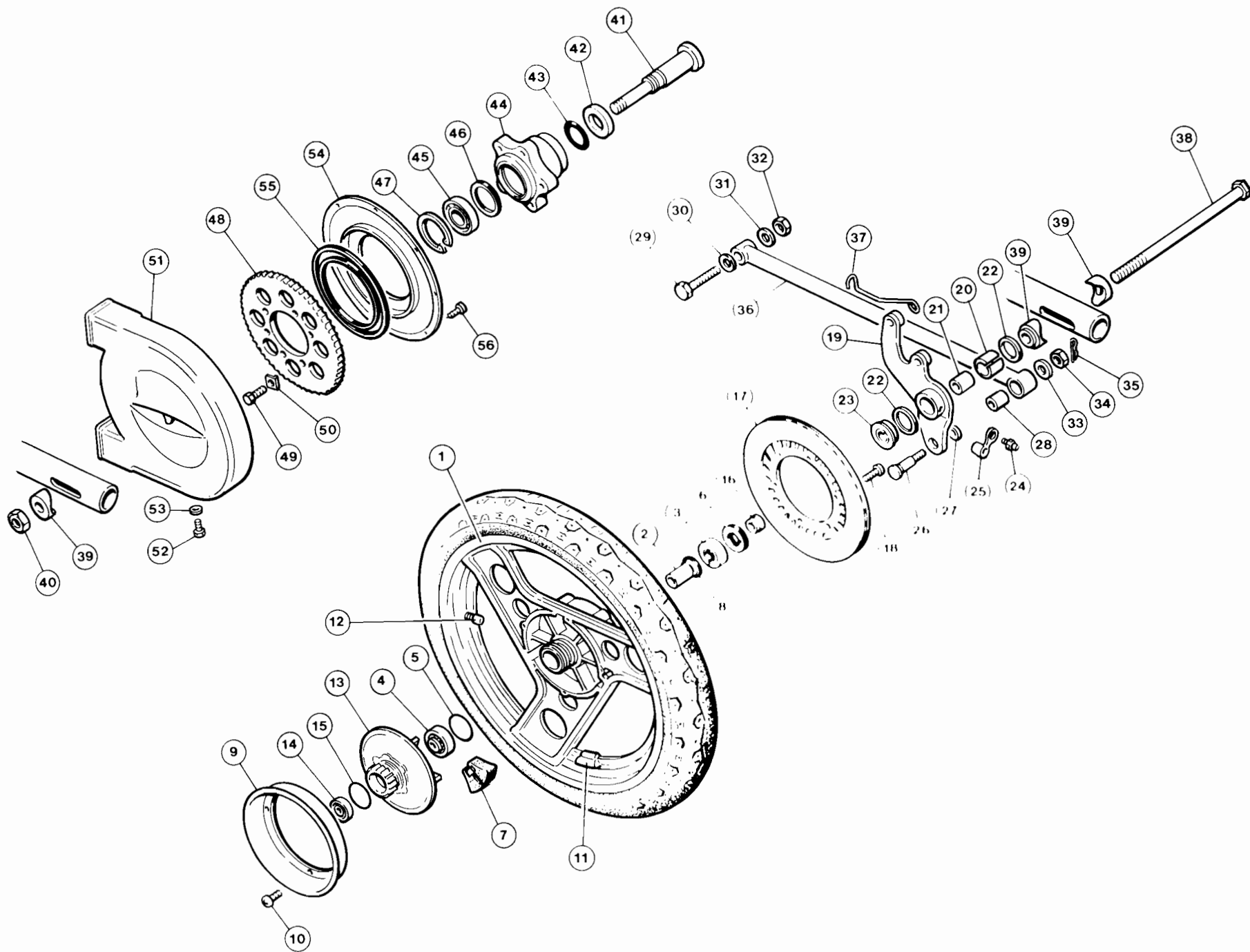
Illus.No.	Part No.	Description	Qty	Illus.No.	Part No.	Description	Qty
1	48-0272	Handlebar	1	25	36Y-83922-00	Front brake lever	1
2	31A-26241-00	Handlebar grip - left hand	1	26	90149-06131	Adjuster screw	1
3	31A-26240-00	Handlebar twist grip assembly - right hand	1	27	90170-06010	Nut	1
4	92-1538	Throttle/oil pump cable	1	28	90110-06074	Bolt	1
5	5HO-26393-00	Cable tube clamp	1	29	95606-06100	Nut	1
6	92-2271	Handlebar switch - left hand	1	30	36Y-83913-00	Collar	1
7	98506-05035	Screw - panhead	2	31	90501-10312	Spring	1
8	58L-83960-00	Choke ring assembly	1	32	36Y-83980-00	Front stop switch	1
9	92-2272	Handlebar Switch - right hand	1	33	97606-04216	Screw - panhead (M4x16)	1
10	98506-05045	Screw - pan head	1	34	92906-04600	Plain washer	1
11	98506-05040	Screw - pan head	1	35	49A-823531-00	Switch lead	1
12	06-6623	Welch plug	2	36	55-0710	Blind grommet	2
13	48-0278	Front brake master cylinder	1	37	41Y-82910-00	Clutch lever assembly	1
14	36Y-W0041-00	Master cylinder seals kit	A/R	38	41Y-82911-00	Clutch lever bracket	1
15	36Y-25852-00	Reservoir cap	1	39	31A-83912-00	Clutch lever	1
16	36Y-25854-00	Diaphragm	1	40	31A-83913-00	Pivot sleeve	1
17	98706-04012	Screw - flat head	2	41	31A-83945-00	Pivot bolt	1
18	36Y-25867-00	Bracket	1	42	95616-06100	Pivot bolt nut	1
19	92906-06100	Spring washer	2	43	97506-06425	Clamp bolt with washer	1
20	91316-06025	Bolt	2	44	90123-08046	Adjuster	1
21	4LO-25862-00	Boot	1	45	90179-08148	Adjuster nut	1
22	4KO-25872-00	Brake hose	1	46	31A-26372-00	Cover for clutch lever	1
23	90401-10096	Union bolt	1	47	92-2042	Clutch cable	1
24	90201-10118	Copper washer	2	48	92-2183	Choke cable	1



FRONT WHEEL AND FRONT BRAKES

Illus.No.	Part No.	Description	Qty	Illus.No.	Part No.	Description	Qty
1	31E-25160-00	Front wheel	1	19	51H-25810-10	Caliper -left hand	1
2	90560-15116	Spacer	1	20	51H-25810-00	Caliper - right hand	1
3	93306-30203	Bearing	2	21	31A-W0057-00	Piston assembly	2
4	93102-22014	Oil seal	1	22	31A-W0047-00	Caliper seal kit	2
5	341-25149-00	Speedometer drive	1	23	26H-W0045-10	Brake pad kit	2
6	341-25846-00	Drive retainer	1	24	29L-25919-00	Support pad	2
7	93105-45017	Oil seal	1	25	1KT-25924-00	Pad pin	2
8	146-25115-00	Flanged spacer	1	26	26H-25925-00	Clip	4
9	29L-25398-00	*Balance weight -10gm	A/R	27	26H-W0048-00	Bleed nipple and cap	2
10	55-1129	Valve	1	28	90105-10308	Bolt	4
11	31A-25181-00	Front wheel spindle	1	29	1FW-25885-00	3 way junction block	1
12	95601-14100	Nut	1	30	23-1121/004	Bolt (M6x25)	2
13	92990-14200	Plain washer	1	31	23-1556/004	Plain washer (M6)	2
14	90387-15550	Collar - right hand	1	32	31A-25873-01	Hose - left hand	1
15	31A-25190-00	Speedometer drive gearbox (29/11)	1	33	31A-25873-11	Hose - right hand	1
16	29L-25831-10	Brake disc - left	1	34	90401-10096	Union bolt	5
17	29L-25831-00	Brake disc - right	1	35	90201-10118	Copper washer	10
18	90109-08718	Bolt	12				

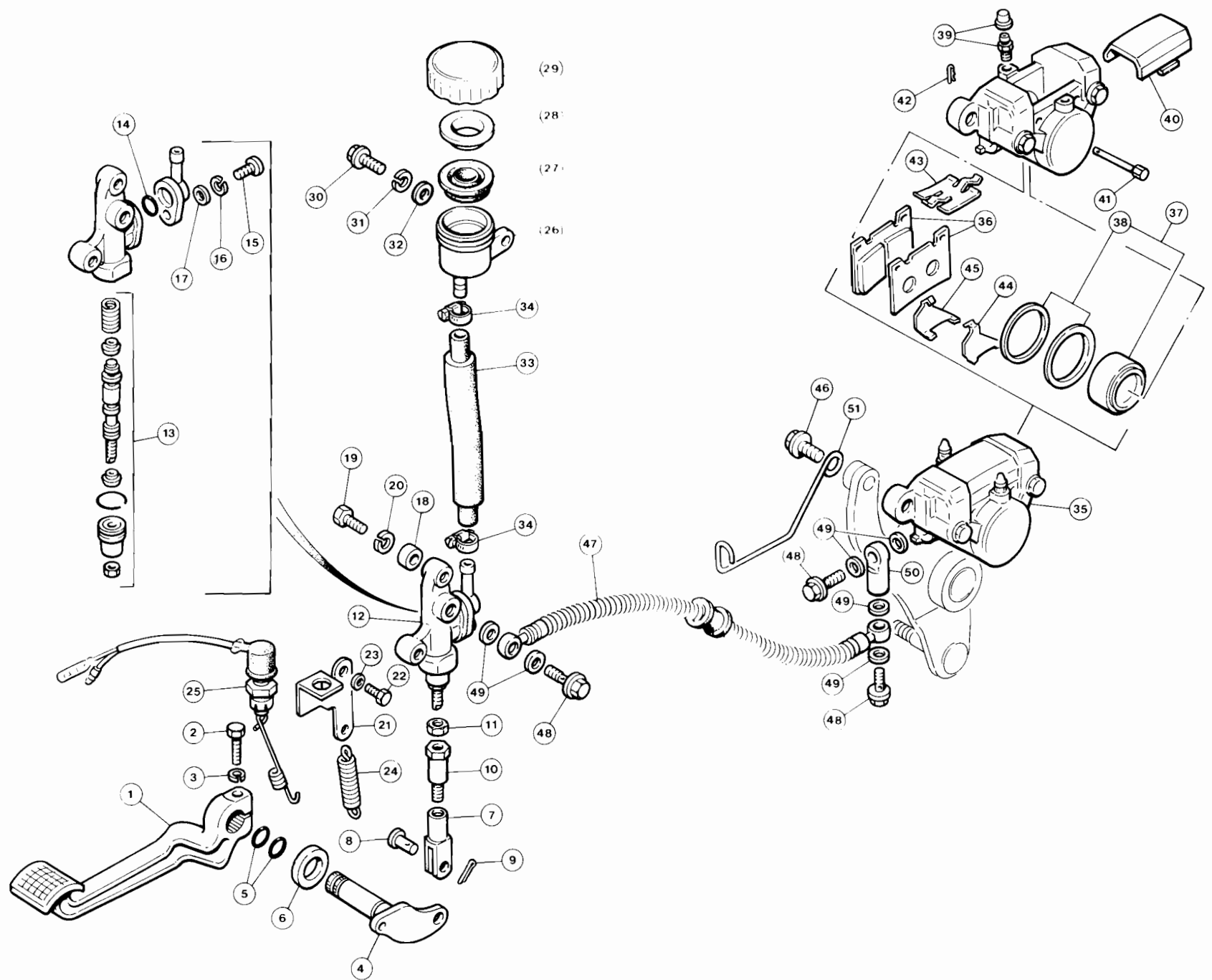
*Alternative balance weights available: 29L-25398-10 - 20gm
29L-25398-20 - 30gm



REAR WHEEL AND BRAKE CALIPER MOUNTING

Illus.No.	Part No.	Description	Qty	Illus.No.	Part No.	Description	Qty
1	31E-25370-00	Rear wheel	1	29	14-0261/004	Bolt (torque rod front) ½in UNF	1
2	90560-17204	Spacer	1	30	34-0138/004	Washer (torque rod)	1
3	93306-30306	Bearing	1	31	92-0764	Shoulder washer - front	1
4	93302-20306	Bearing	1	32	14-1305/004	Lock nut ½in UNF	1
5	93210-48530	'O' ring	1	33	92-1380	Shoulder washer - rear	1
6	93102-25044	Oil seal	1	34	23-2113/004	Nyloc nut (M10)	1
7	4GO-25364-00	Drive rubber	6	35	92-0766	Securing clip	1
8	148-25315-00	Flanged spacer	1	36	92-0727	Brake torque rod	1
9	31A-25327-00	Cover plate	1	37	92-1819	Brake hose support	1
10	98501-05010	Screw - pan head	4	38	44-0121	Detachable spindle	1
11	29L-25398-00	*Balance weight - 10gm	A/R	39	44-0112	Abutment - spindle nut	3
12	55-1129	Valve	1	40	23-5036/A2-70	Spindle nut (M16)	1
13	31A-25366-00	Drive plate	1	41	44-0114	Fixed spindle	1
14	93306-20310	Bearing	1	42	44-0115	Spacer	1
15	93210-57428	'O' ring	1	43	55-0424	'O' ring	1
16	90387-170J6	Collar	1	44	44-0109	Sprocket carrier	1
17	31A-25831-51	Brake disc	1	45	55-0937	Bearing	1
18	90109-08718	Bolt	6	46	55-0895	Oil seal	1
19	92-2079	Rear caliper mounting plate	1	47	55-0872	Circlip	1
20	92-1822	Outer bush	1	48	44-0080	Spocket 43T	1
21	44-0060	Inner bush	1	49	44-0129	Screw ¾in. U.N.F.	5
22	44-0061	Square section sealing ring	2	50	44-0095	Tab washer	5
23	44-0111	Caliper plate spacer	1	51	69-0637/008	Outer cover - rear wheel sprocket	1
24	44-0024	Grease nipple	1	52	23-4031/A2-70	Drain screw	1
25	44-0026	Grease nipple cap	1	53	34-0061	Copper washer	1
26	92-1164	Stud (caliper plate for torque rod)	1	54	69-0801/008	Inner cover - rear wheel sprocket	1
27	92-1381	Retaining washer - caliper plate stud	1	55	55-0896	Oil seal	1
28	55-0322	Metaltastic bush	2	56	23-4365	Screw - posidrive pan head (M5x12)	10

*Alternative balance weights available: 29L-25398-10 - 20gm
29L-25398-20 - 30gm

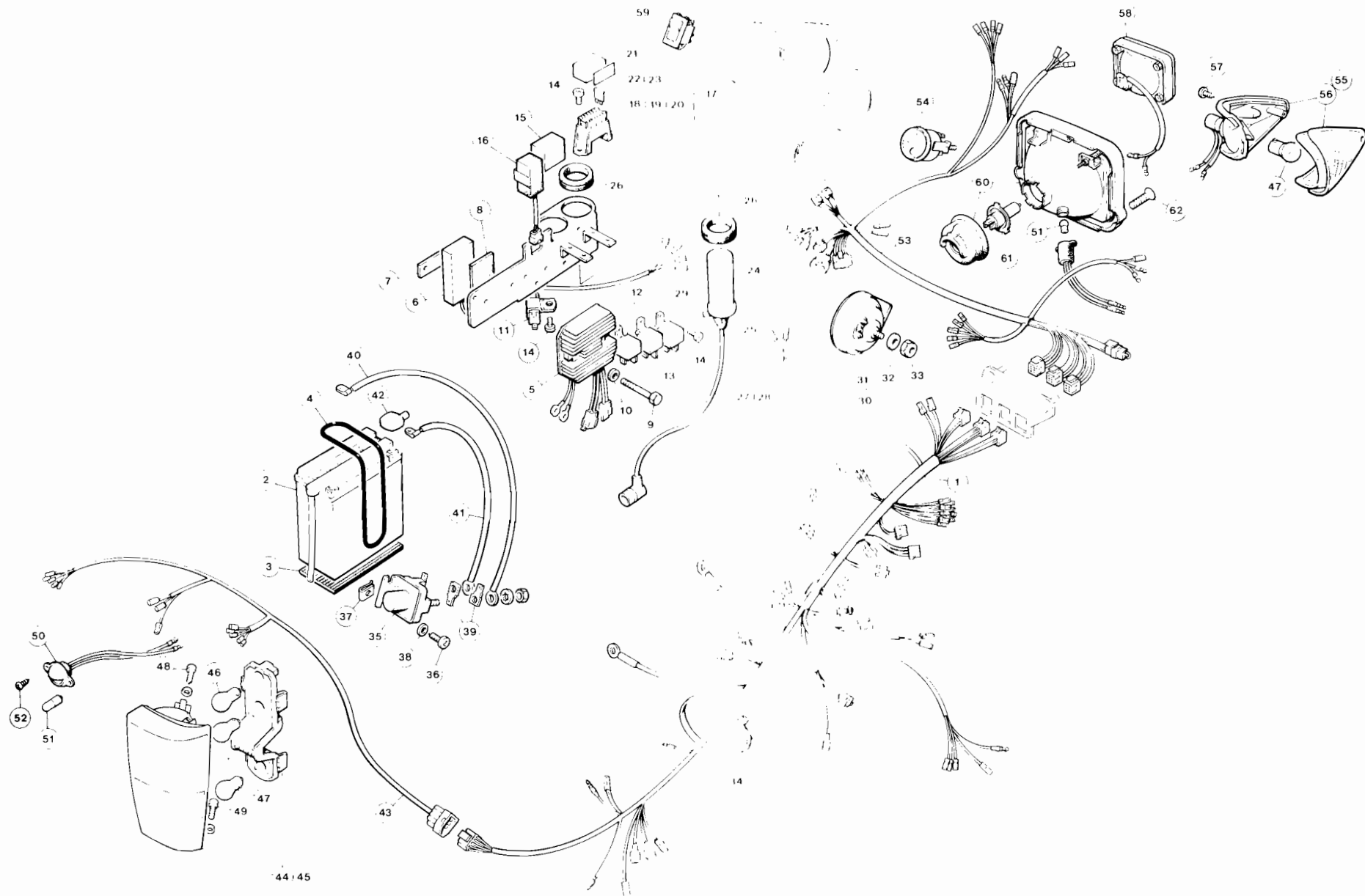


REAR BRAKE MASTER CYLINDER, BRAKE PEDAL AND CALIPER

Illus.No.	Part No.	Description	Qty	Illus.No.	Part No.	Description	Qty
1	92-2094	Rear brake pedal	1	26	31A-25894-01	Fluid reservoir	1
2	23-1122/004	Screw (M6x30)	1	27	360-25854-00	Diaphragm	1
3	23-1571/004	Plain washer (M6)	1	28	2GU-25855-00	Diaphragm bush	1
4	92-2032	Spindle assembly	1	29	2GU-25852-50	Reservoir cap	1
5	55-0319	'O' ring - brake pedal spindle	2	30	23-1035/004	Screw (M6x20)	1
6	92-2033	Spacer	1	31	23-1605/004	Spring washer	1
7	31A-27222-00	Joint	1	32	23-1503/004	Plain washer	1
8	90240-08013	Clevis pin	1	33	31A-25895-00	Hose	1
9	34-0258	Split pin	1	34	90460-16068	Clamp	2
10	92-1089	Extension	1	35	41Y-25810-52	Caliper	1
11	95303-08700	Nut	1	36	1FK-W0045-00	Brake pad kit	A/R
12	31A-25850-50	Master cylinder	1	37	31A-W0057-00	Piston assembly	1
13	31A-W0042-50	Cylinder kit	A/R	38	31A-W0047-00	Caliper seal kit	A/R
14	93210-15620	'O' ring	1	39	IJ3-W0048-00	Bleed screw kit	A/R
15	98506-04012	Screw - pan head	1	40	41Y-25836-00	Dust cover	1
16	92906-04100	Spring washer	1	41	1KT-25924-00	Brake pad pin	2
17	92906-04600	Plain washer	1	42	26H-25925-00	Clip	2
18	92-0420	Spacer	2	43	26H-25919-00	Pad support	1
19	23-1141/004	Bolt - (M8x30) Hex	2	44	1FK-25827-00	Shim - L.H.	1
20	23-1557/004	Plain washer	2	45	1FK-25828-00	Shim - R.H.	1
21	92-1800	Anchor bracket	1	46	90105-10308	Bolt	2
22	23-1032/004	Screw (M6x1)	1	47	31A-25872-50	Brake hose	1
23	23-1605/004	Plain washer (M6)	1	48	90401-10096	Banjo bolt	3
24	55-0251	Spring - pedal return	1	49	90201-10118	Copper washer	6
25	1E9-82530-00	Stop switch c/w spring	1	50	92-2250	Banjo adaptor	1
				51	92-1819	Brake hose support	1

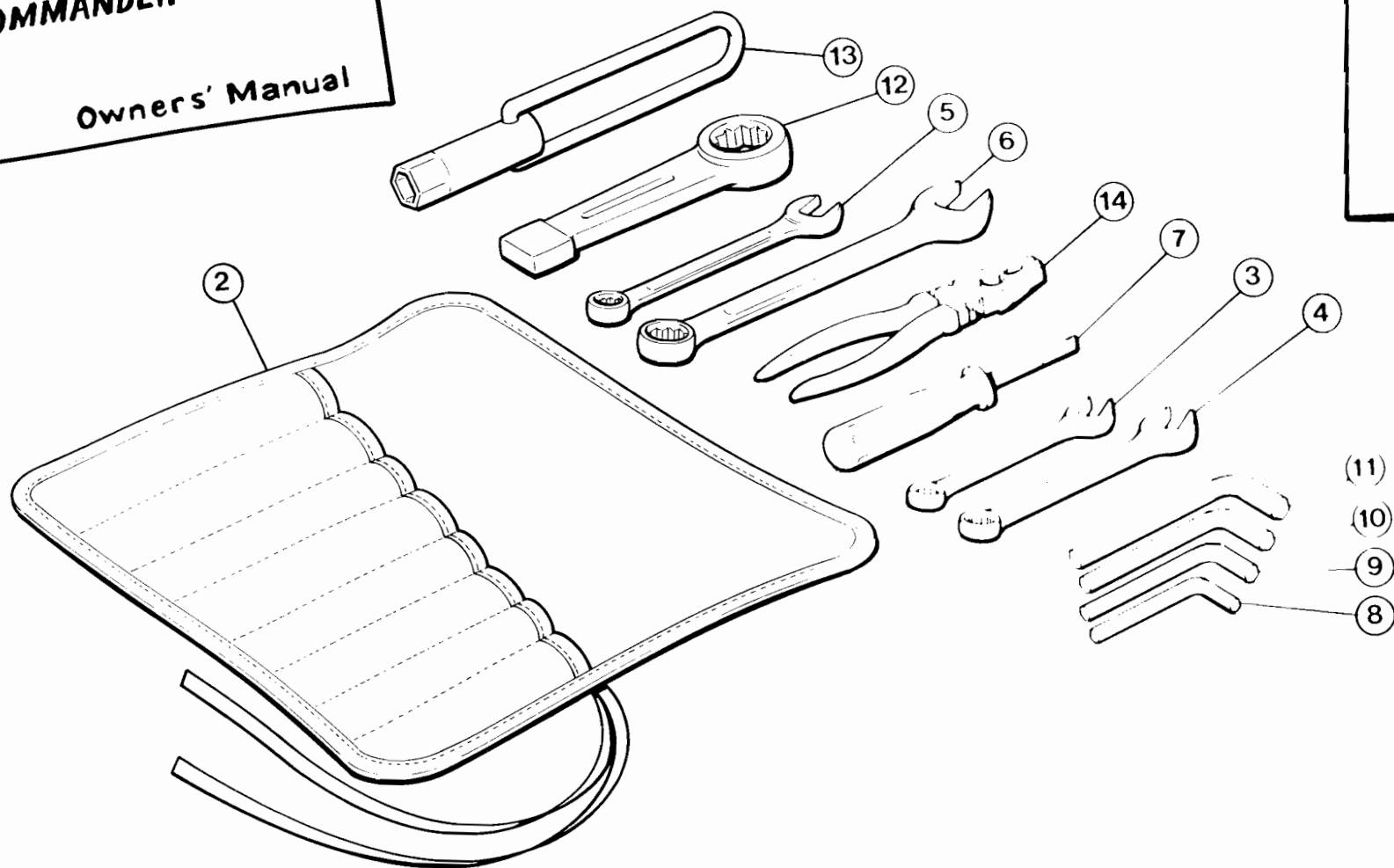
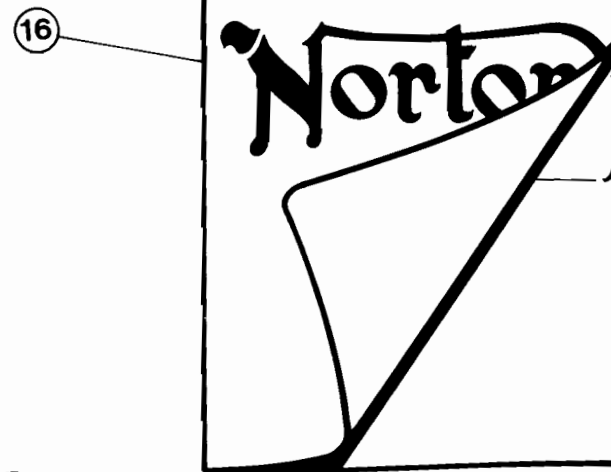
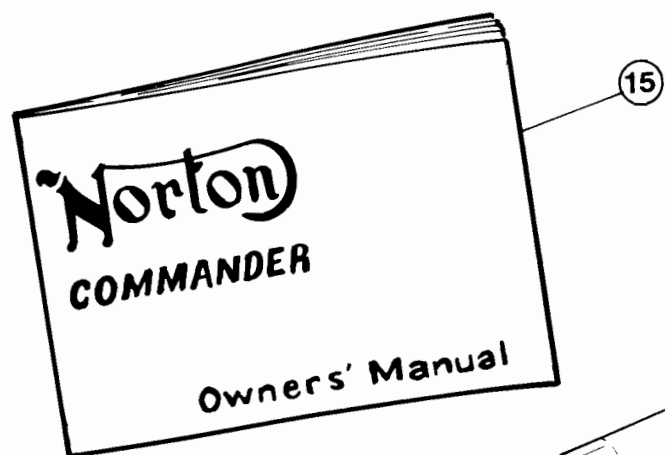
FOOTRESTS, MOUNTING PLATES AND EXHAUST SYSTEM

Illus.No. Part No. Description			Qty	Illus.No. Part No. Description			Qty
1	92-0959/008	Footrest and silencer mtg.plate - L.H.	1	25	55-0174	Clevis pin	2
2	92-1804/008	Footrest and silencer mtg.plate - R.H.	1	26	23-1571/004	Washer	2
3	23-1063/004	Screw (M10x25) Hex	1	27	34-0074	Split pin	2
4	23-1287/004	Screw (M10x30) socket cap	1	28	92-1448	Exhaust manifold	1
5	23-1065/004	Screw (M10x35) socket cap	1	29	92-1455	Exhaust manifold gasket	2
6	23-1064/004	Screw (M10x30) Hex	1	30	23-4267	Screw (M8x30) socket cap	6
7	23-1290/004	Bolt (M10x40) socket cap	2	31	92-0835	Silencer left hand	1
8	23-1171/004	Bolt (M10x90) Hex	1	32	92-0836	Silencer right hand	1
9	92-1354	Spacer	2	33	92-0752	Exhaust pipe clamp	2
10	23-1558/004	Plain washer (M10)	2	34	34-0104/A2-70	'U' bolt clamp	2
11	92-1794	Footrest mounting arm - R.H.	1	35	23-5003/A2-70	Nut (M8)	4
12	92-1797	Footrest mounting arm - L.H.	1	36	23-1606/004	Washer	4
13	55-0531	Collar	1	37	92-0837	Heatshield - left hand	1
14	92-1787	Footrest	2	38	92-0838	Heatshield - right hand	1
15	92-0224	Footrest rubber	2	39	23-4372/A2-70	Screw - shield to silencer	2
16	92-0953	Silencer bracket - left hand	1	40	23-4605	Washer - stainless	2
17	55-0520	Buffer - centre stand	1	41	92-1421	Curved washer	2
18	92-0897	Silencer bracket right hand	1	42	23-4039/A2-70	Screw silencer mounting (M8x1.25x12 hex hd)	4
19	23-1043/004	Screw (M8x25) Hex	2	43	23-4557	Plain washer - stainless	4
20	23-1552/004	Shakeproof washer (M8)	4	44	92-1015	Rubber buffer - side stand	1
21	23-4039	Screw (M8x12)	2	45	92-0799	Heatbreak washer - plain	1
22	92-0621	Pillion footrest assembly - L.H.	1	46	92-0800	Heatbreak washer - shouldered	1
23	92-0622	Pillion footrest assembly - R.H.	1	47	23-1503/004	Washer M6 plain	1
24	55-0173	Pillion footrest rubber	2	48	23-5002/A3-70	Nut M6	1



ELECTRICAL EQUIPMENT

Illus.No.	Part No.	Description	Qty	Illus.No.	Part No.	Description	Qty
1	92-2120	Main wiring harness	1	32	23-1556/004	Plain washer (M6)	2
2	55-0290	Battery 12v x 14AH	2	33	23-2111/004	Nyloc nut (M6)	2
3	92-1014	Mat	2	34	55-0716	Cable tie	2
4	55-0384	'O' ring battery strap	2	35	55-0470	Starter solenoid	1
5	55-1084	Voltage regulator	1	36	34-0164/004	Screw – self tapping – No.10	2
6	92-2212	Ignition unit	1	37	55-0431	Captive nut	2
7	92-2222	Clamp strap	1	38	23-1554/004	Plain washer M4	2
8	55-1252	Adhesive foam pad	2	39	55-0781	Spade connectors	2
9	23-1106/004	Bolt (M5x50)	2	40	92-2185	Cable - solenoid to battery - L.H.	1
10	23-1555/004	Plain washer (M5)	10	41	92-0433	Cable - solenoid to battery - R.H.	1
11	55-1141	Ballast resistor	1	42	55-1243	Boot – battery +ve connection	2
12	55-1093	Relay - green (horns/air horns)	2	43	92-2251	Rear lamp sub-harness	1
13	55-1261	Relay - black (daylamps)	1	44	55-1126	Rear lamp - L.H.	1
14	23-1364	Screw (0.8 x 10) posidrive	8	45	55-1127	Rear lamp - R.H.	1
15	4KO-83350-20	Flasher relay - black	1	46	99-0542	Bulb 380 - 12v ⁵ / ₂₁ w	2
16	92-2275	Flasher cancel unit	1	47	99-1192	Bulb 382 - 12v 21w	6
17	55-1152	Fuse box	2	48	34-0311/004	Screw - self tapping	6
18	55-0810	Fuse 30A	3	49	23-1222/004	Screw - socket head	8
19	55-0819	Fuse 15A	3	50	55-0689	Number plate lamp	1
20	55-0837	Fuse 10A	2	51	55-0277	Bulb 233 - 12v 4w	2
21	92-2204	Fuse box cover	2	52	23-1334/004	Screw (M3x10) posidrive	2
22	92-2121	Fuse identification label - L.H.	1	53	92-2144	Wiring harness - front section	1
23	92-2213	Fuse identification label - R.H.	1	54	55-1227	Temperature gauge	1
24	55-1153	Ignition coil (Lucas 6v DLB159)	2	55	92-2267	Indicator - L.H. (complete with lens)	1
25	92-2228	Boot for ignition coil	2	56	92-2268	Indicator - R.H. (complete with lens)	1
26	55-1241	Grommet	2	57	34-0323	Screw (No.6) self tapping	4
27	92-2178	H.T. lead complete - L.H.	1	58	92-2269	Daylight unit (c/w fixing screws)	2
28	92-2202	H.T. lead complete - R.H.	1	59	55-1279	Fog lamp switch	1
29	92-2365	Ignition coil sub-harness	1	60	31A-B4303-EO	Light unit	1
30	92-1533	Horn - L.H.	1	61	06-8022	Bulb H4 12v 60/55w	1
31	92-1534	Horn - R.H.	1	62	23-2348	Screw (M6x30) c/sunk	2



TOOL KIT

Illus.No. Part No.		Description	Qty
1	92-2160	Tool Kit complete	1
2	92-1721	Tool roll	1
3	55-1064	Combination spanner 10mm	1
4	55-1065	Combination spanner 12mm	1
5	55-1066	Combination spanner 13mm	1
6	55-1067	Combination spanner 17mm	1
7	55-0156	Combination screwdriver	1
8	55-0158	Allen key 4mm	1
9	55-0159	Allen key 5mm	1
10	55-0160	Allen key 6mm	1
11	55-0161	Allen key 8mm	1
12	55-1063	Slogging spanner 24mm	1
13	55-1068	Sparking plug spanner 16mm	1
14	55-1069	Combination pliers	1
15	92-2158	Operators manual	1
16	92-1166	Document folder	1